

Manor Collection

Manors is a collection of new single-family homes for sale with several floorplan options at the Storey Creek masterplan in Kissimmee, FL. Residents will enjoy upcoming amenities, like a playground and sport courts, while being near a historic downtown and major highways—including SR 535, I-4, and US 192. Near the Everglades, the area offers kayaking, air-boating, hiking, and horseback-riding. Orlando is only 23 miles away.

Floorplans

Annapolis

3 bd . 2 ba . 1444 ft²

Sheffield

4 bd . 2 ba . 1 half ba . 2334 ft²

Columbia

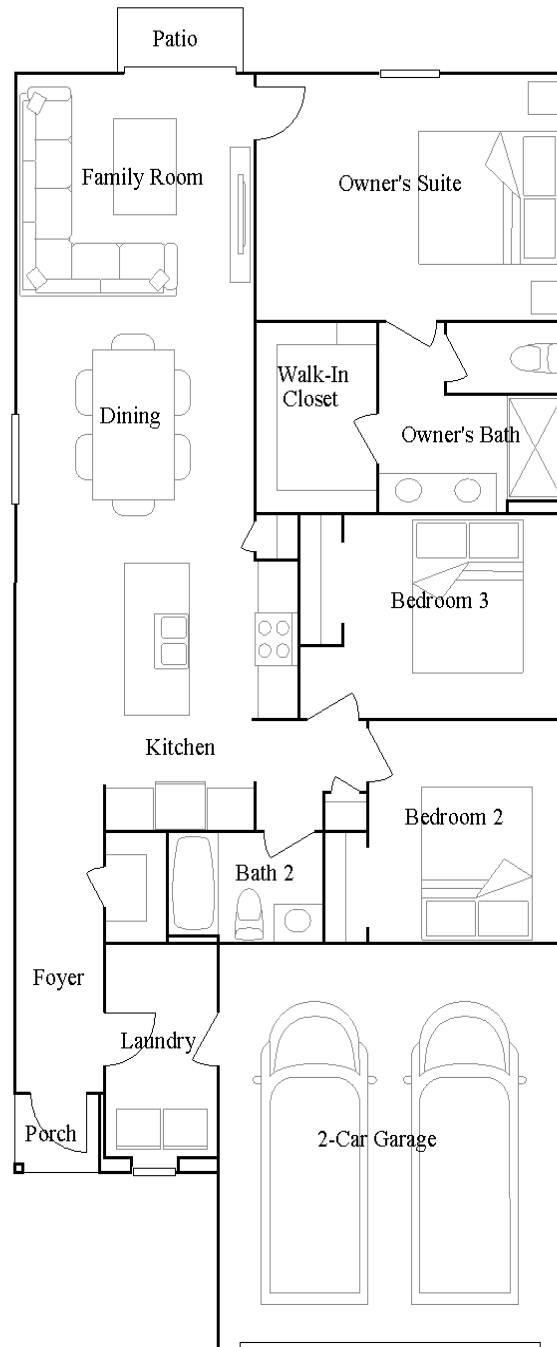
5 bd . 2 ba . 1 half ba . 2370 ft²



Annapolis

3 bd · 2 ba · 1444 ft²

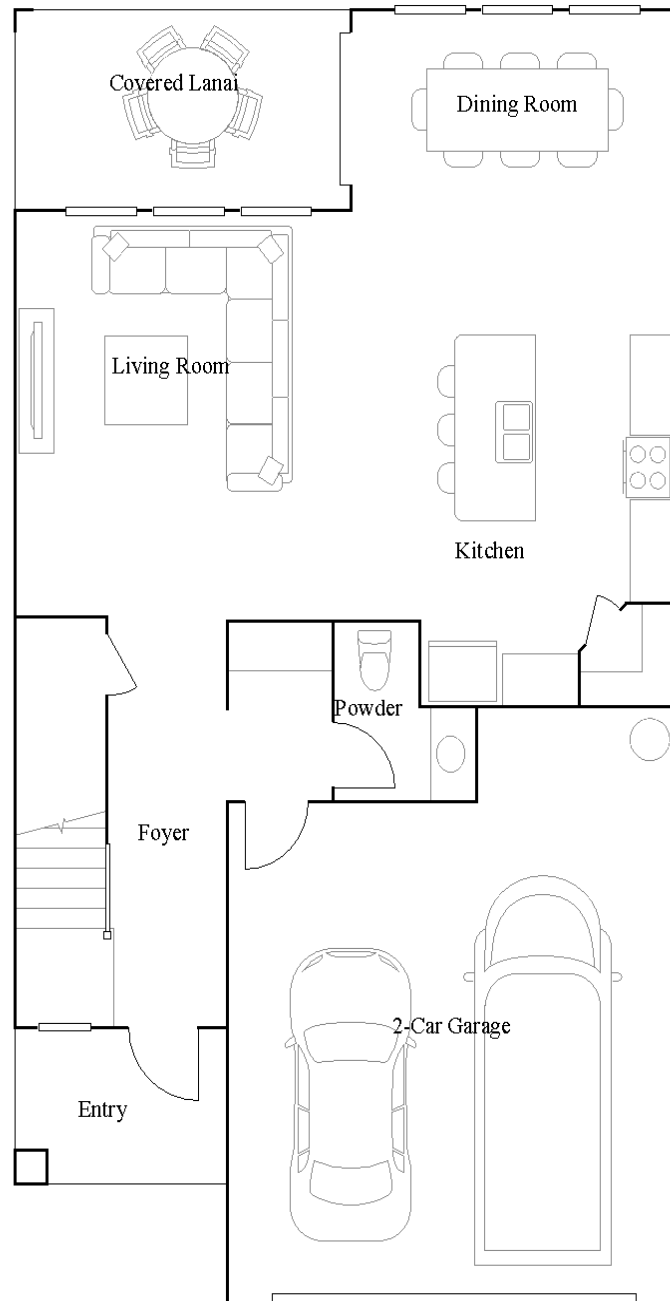
1st Floor



Sheffield

4 bd · 2 ba · 1 half ba · 2334 ft²

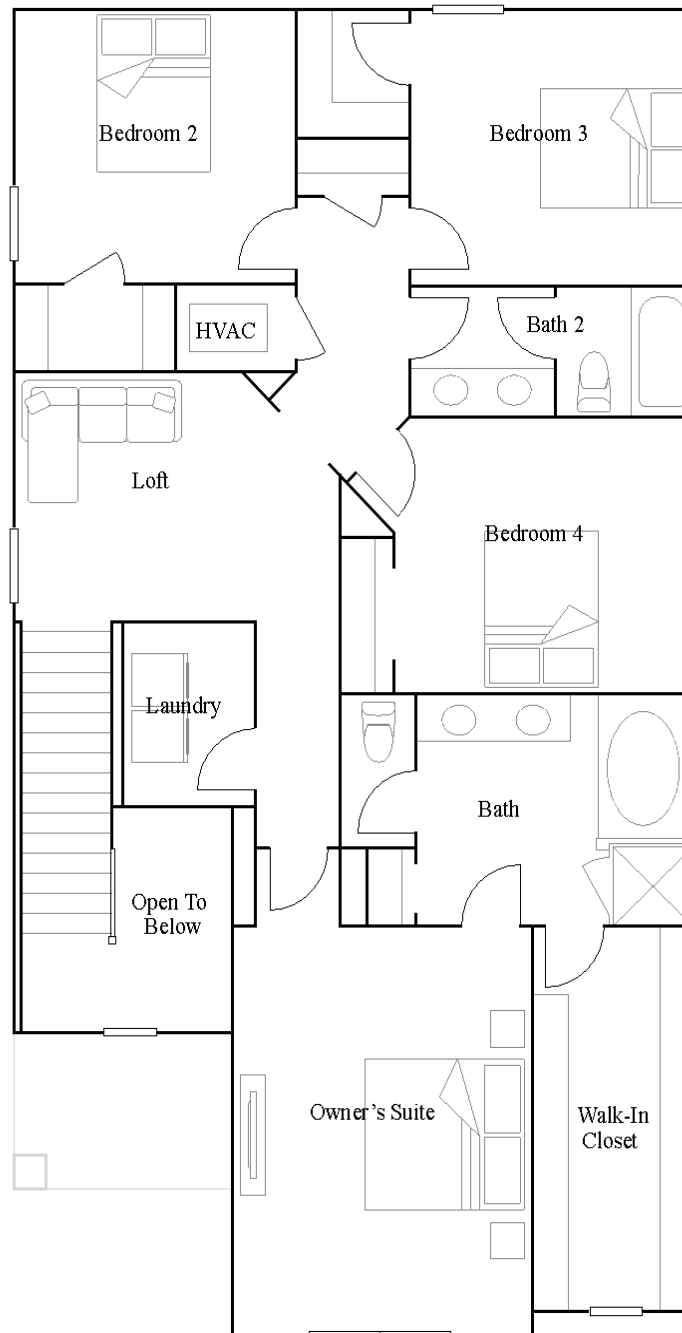
1st Floor



Sheffield

4 bd · 2 ba · 1 half ba · 2334 ft²

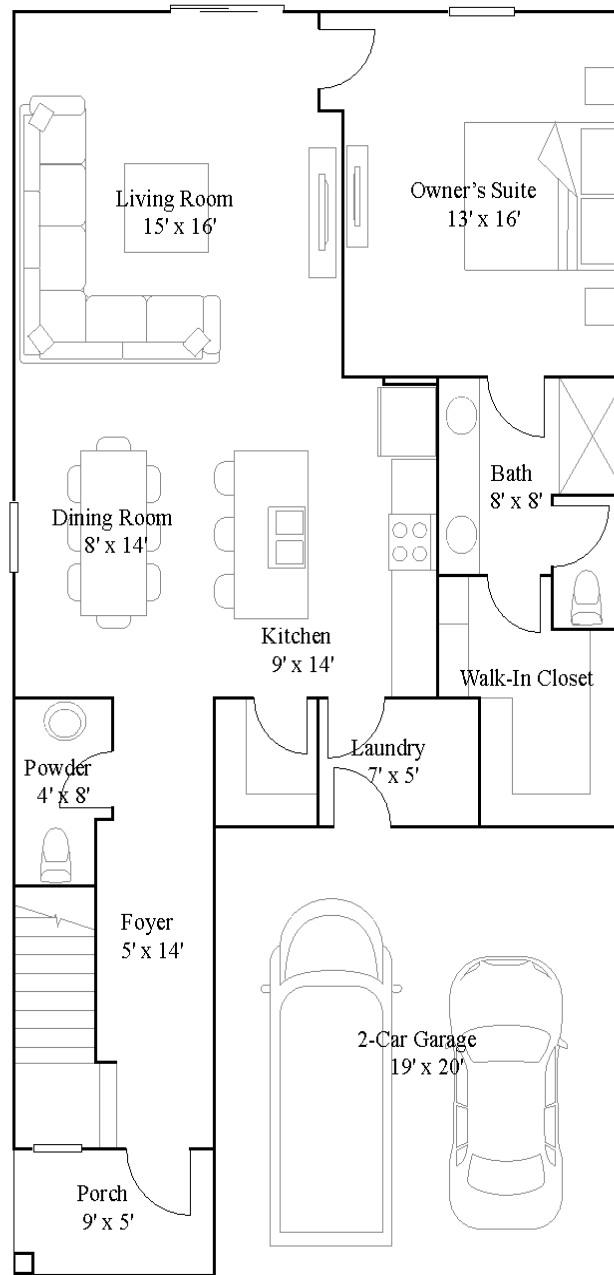
2nd Floor



Columbia

5 bd · 2 ba · 1 half ba · 2370 ft²

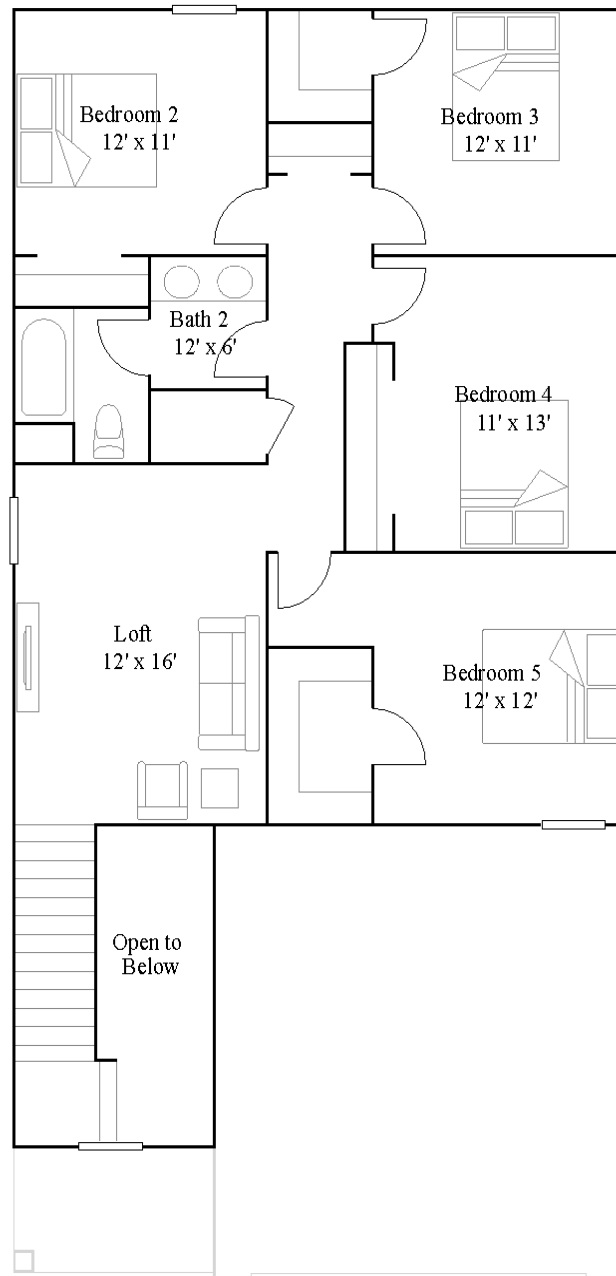
1st Floor



Columbia

5 bd · 2 ba · 1 half ba · 2370 ft²

2nd Floor



Executive Key Collection

Executive Key is a collection of new homes for sale at the Storey Creek masterplan in Kissimmee, FL. Residents enjoy access to onsite amenities, including sports courts, a playground and walking trails. There are local schools within walking distance, ideal for growing households, and the Loop is located nearby for shopping. Homeowners will enjoy proximity to several nearby theme parks, including the world-renown Disney World. For road trips, major Florida highways like SR 535, I-4 and US 192 are a short drive away.

Floorplans

Aspire

3 bd . 2 ba . 1843 ft²

Bravo

4 bd . 3 ba . 2205 ft²

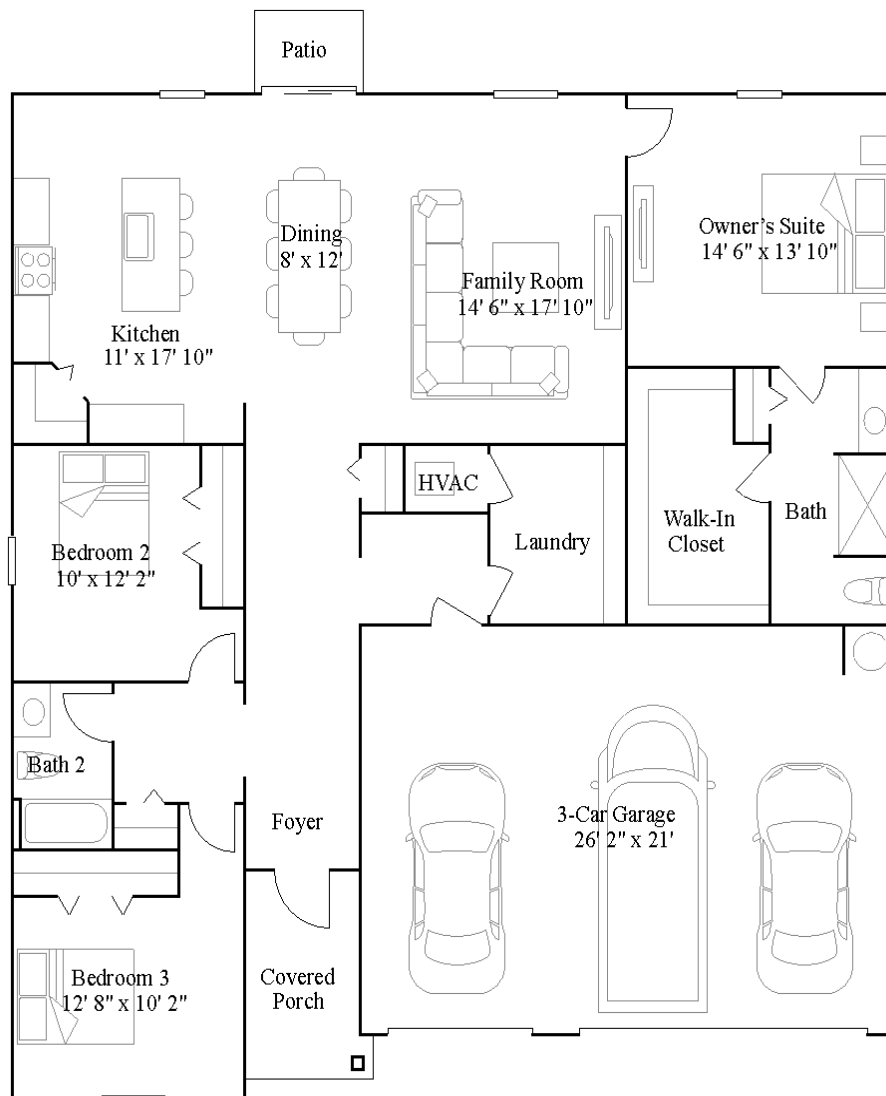
Heritage

5 bd . 3 ba . 2587 ft²

Aspire

3 bd · 2 ba · 1843 ft²

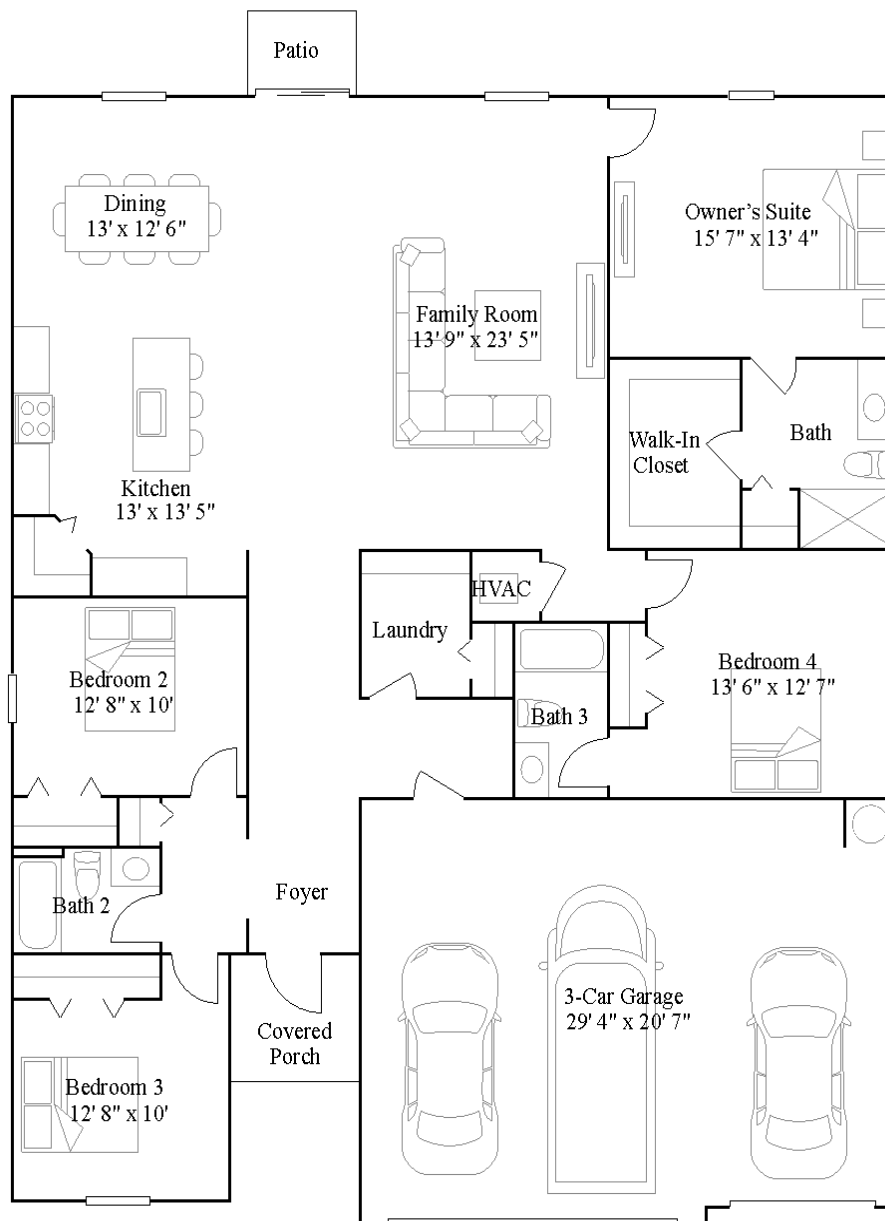
1st Floor



Bravo

4 bd · 3 ba · 2205 ft²

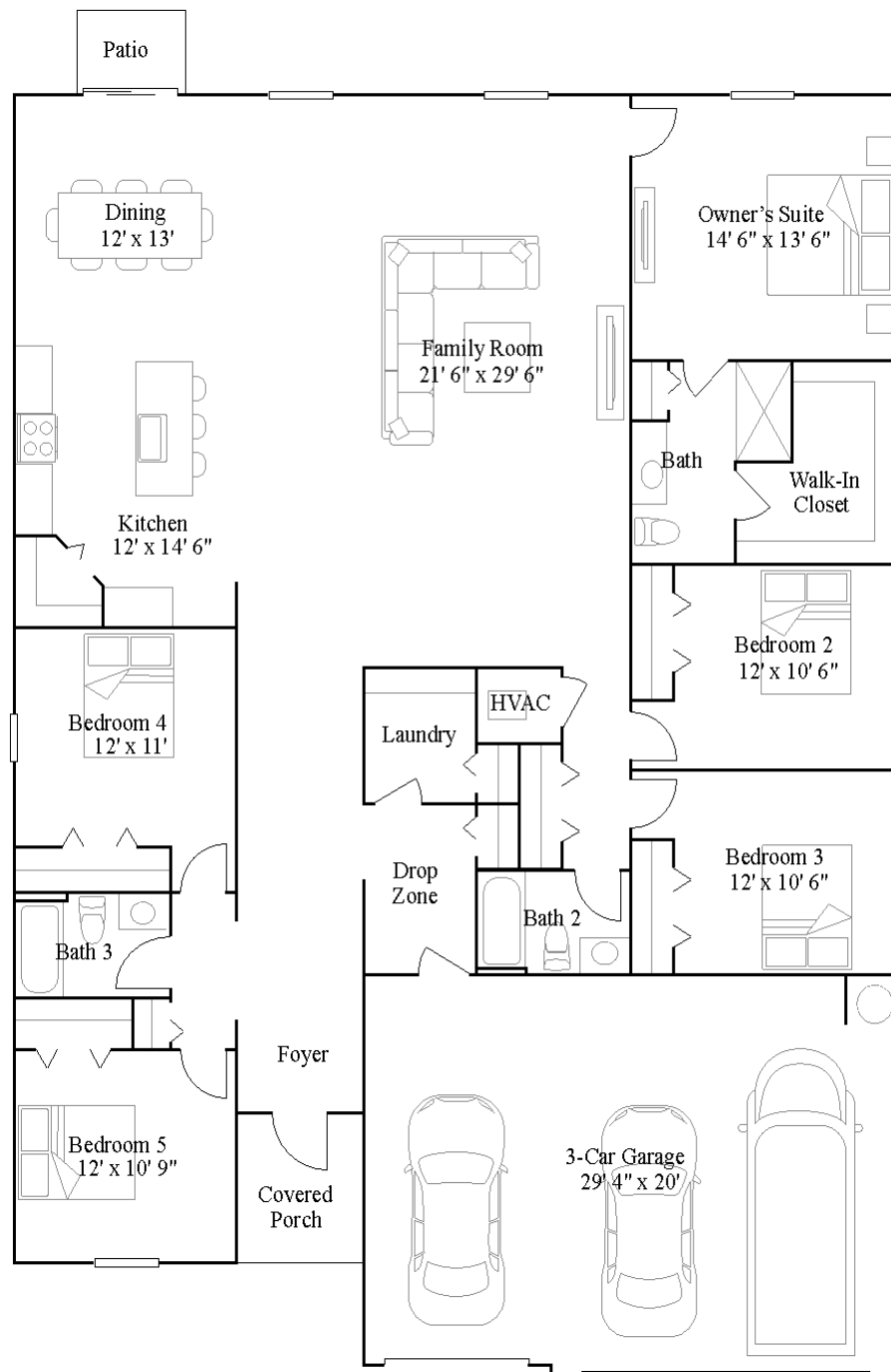
1st Floor



Heritage

5 bd · 3 ba · 2587 ft²

1st Floor



Estate Collection

Estates is a collection of new single-family homes with lots of floorplan options for sale at the Storey Creek masterplan in Kissimmee, FL. Residents will enjoy tons of upcoming amenities, including sports courts and a swimming pool. The city boasts several schools, parks and a historic downtown area brimming with restaurants and shops. With close proximity to major highways like SR 535, I-4, and US 192, Orlando and its world-class attractions are only 40 minutes away.

Floorplans

Dover

3 bd . 2 ba . 1555 ft²

Allentown

4 bd . 2 ba . 1853 ft²

Freedom

4 bd . 3 ba . 2109 ft²

Durham

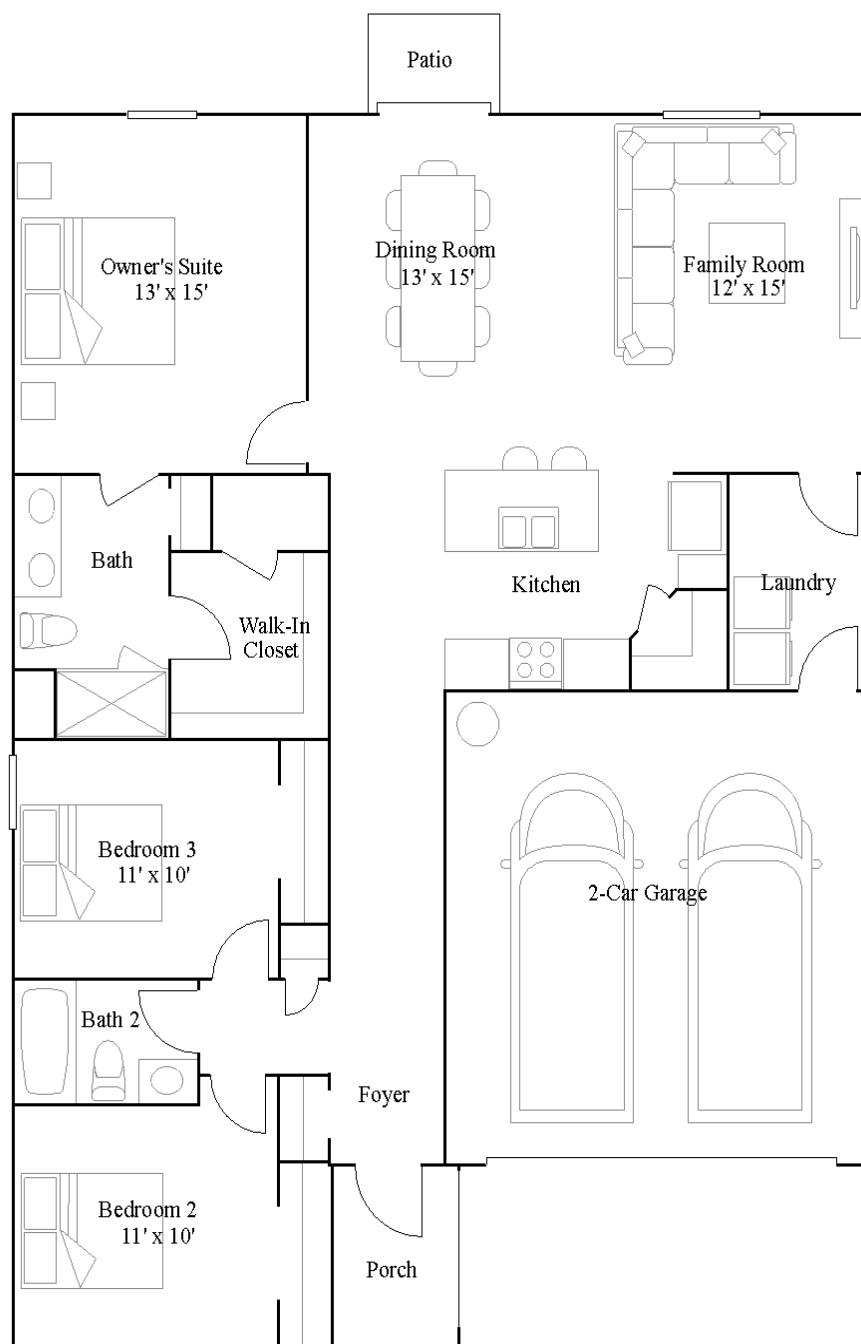
5 bd . 2 ba . 1 half ba . 2896 ft²



Dover

3 bd · 2 ba · 1555 ft²

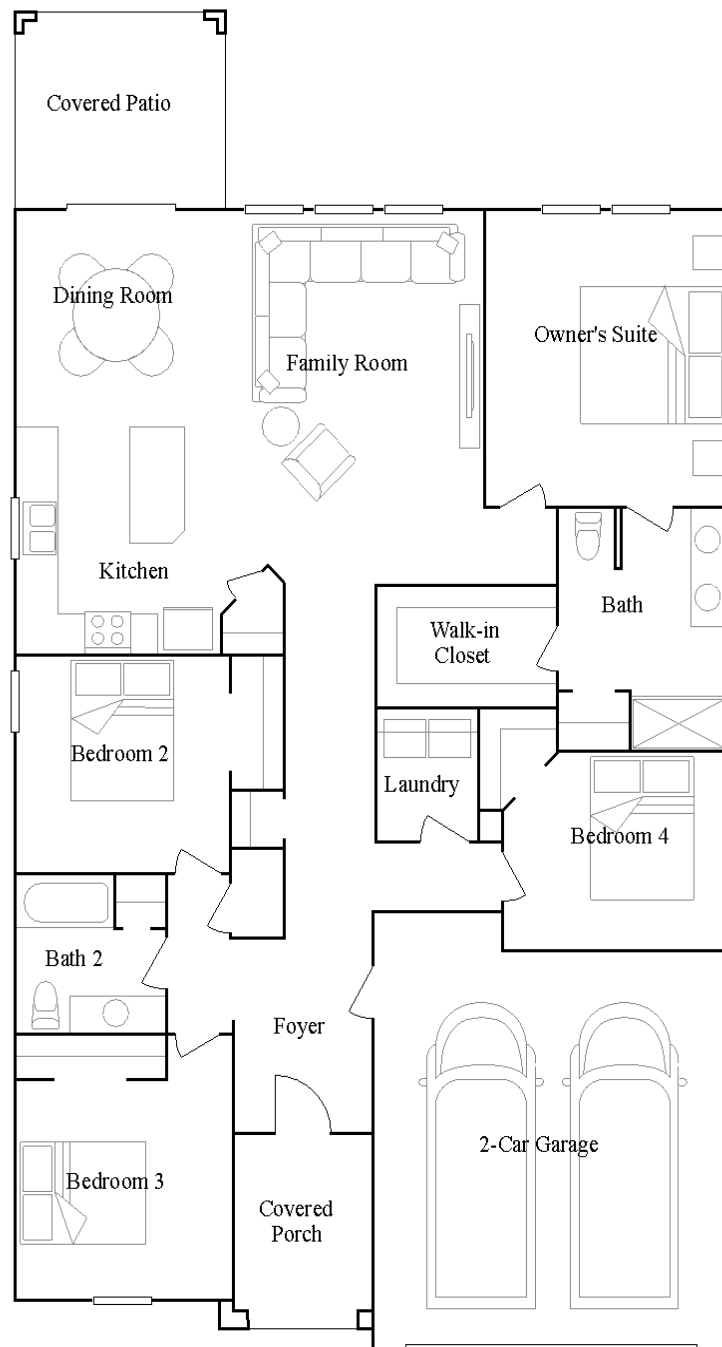
1st Floor



Allentown

4 bd · 2 ba · 1853 ft²

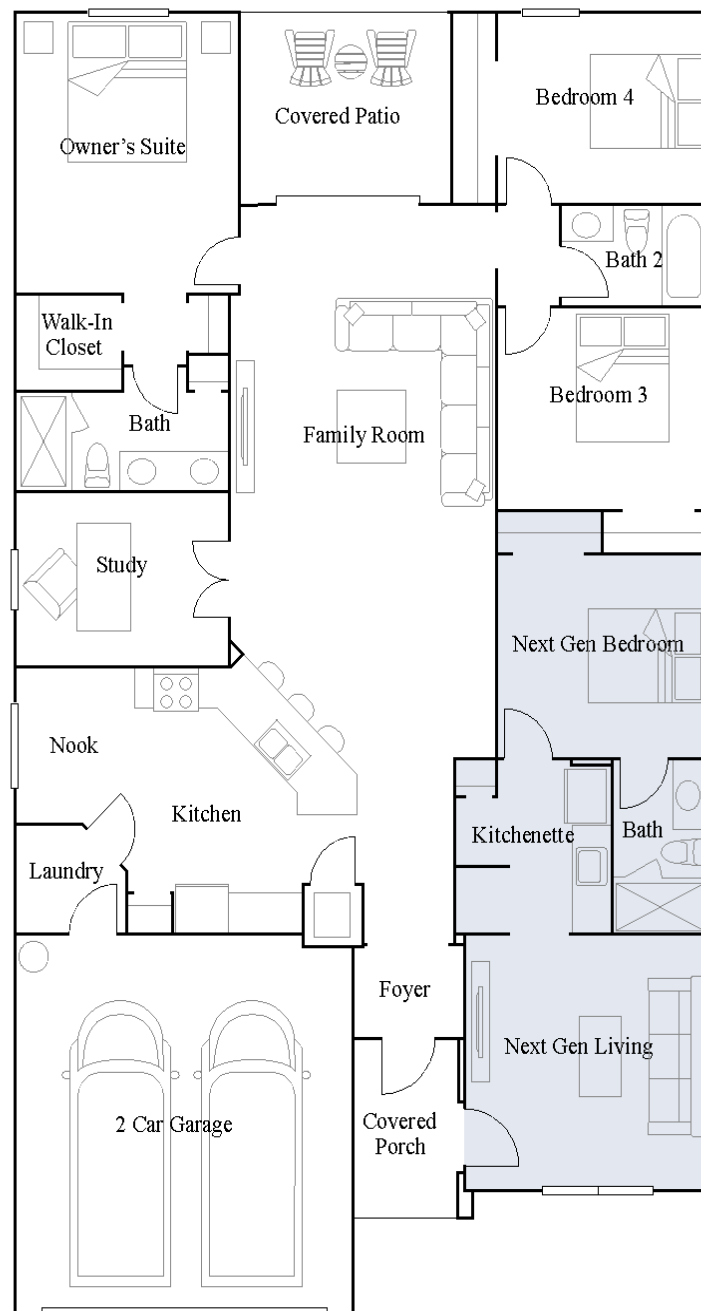
1st Floor



Freedom

4 bd · 3 ba · 2109 ft²

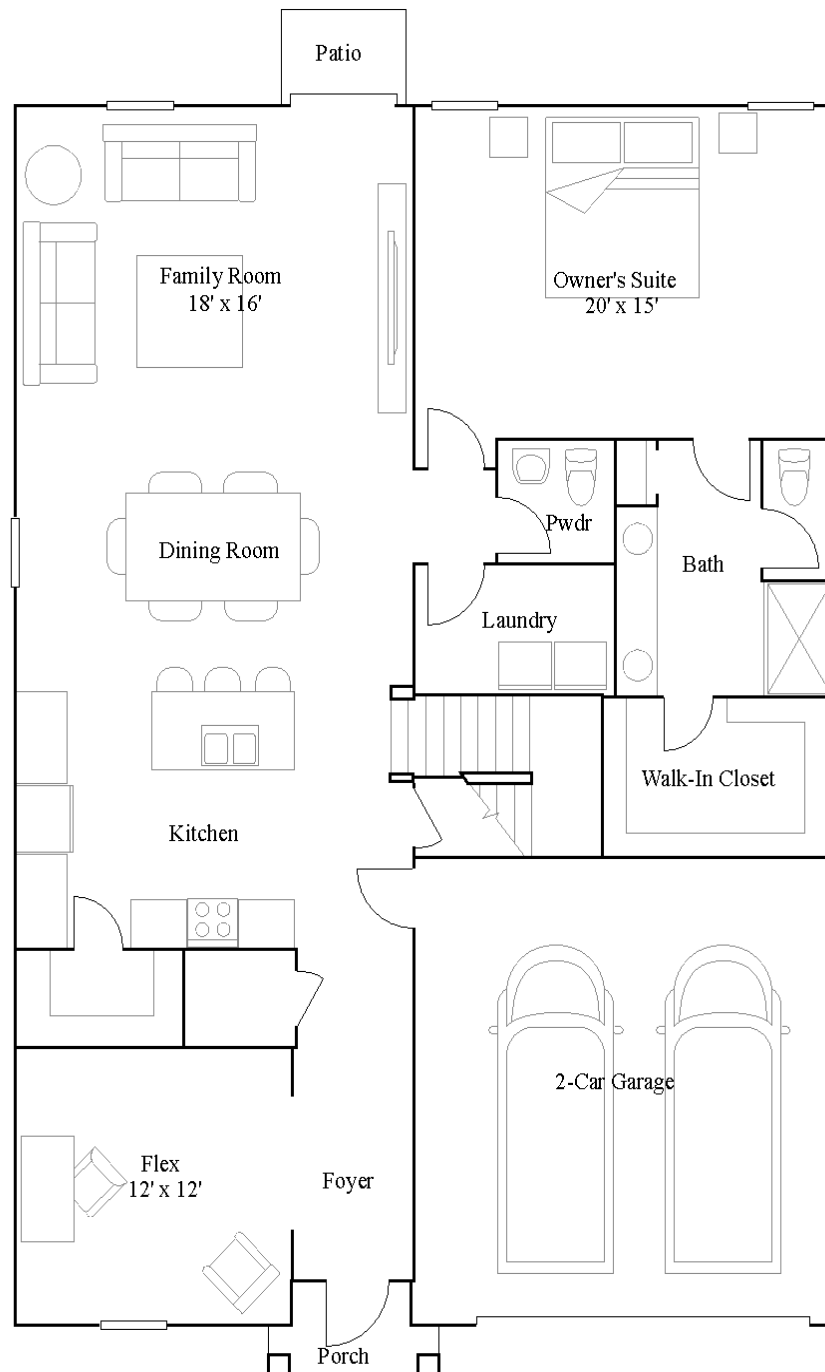
1st Floor



Durham

5 bd · 2 ba · 1 half ba · 2896 ft²

1st Floor



Durham

5 bd · 2 ba · 1 half ba · 2896 ft²

2nd Floor

