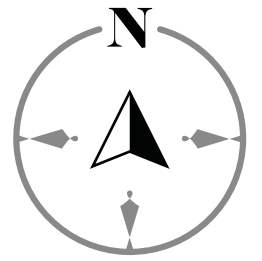
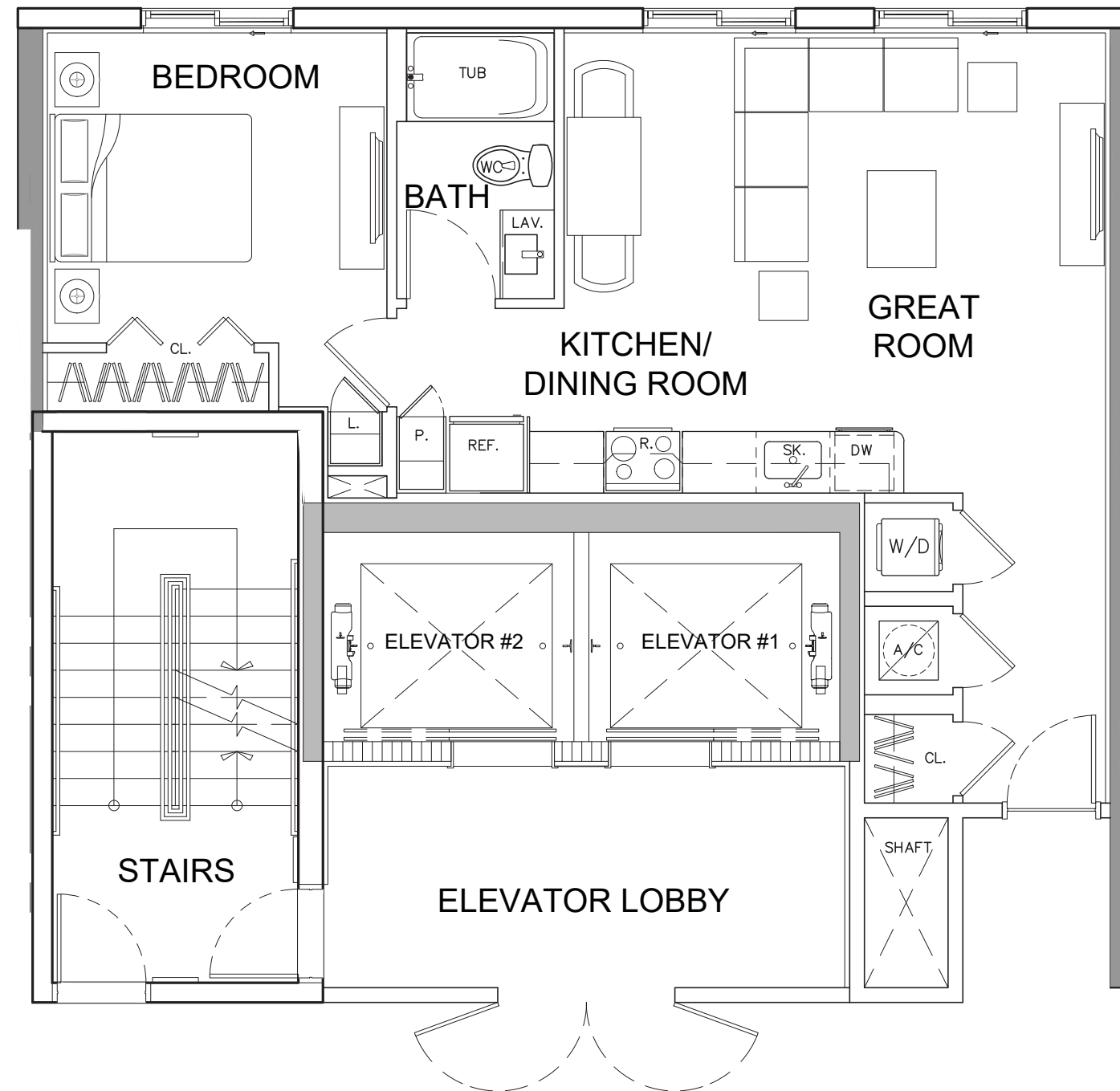


SHOMA
bay



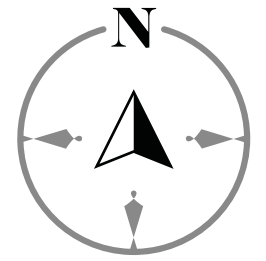
NORTH LINE KEY: (01)



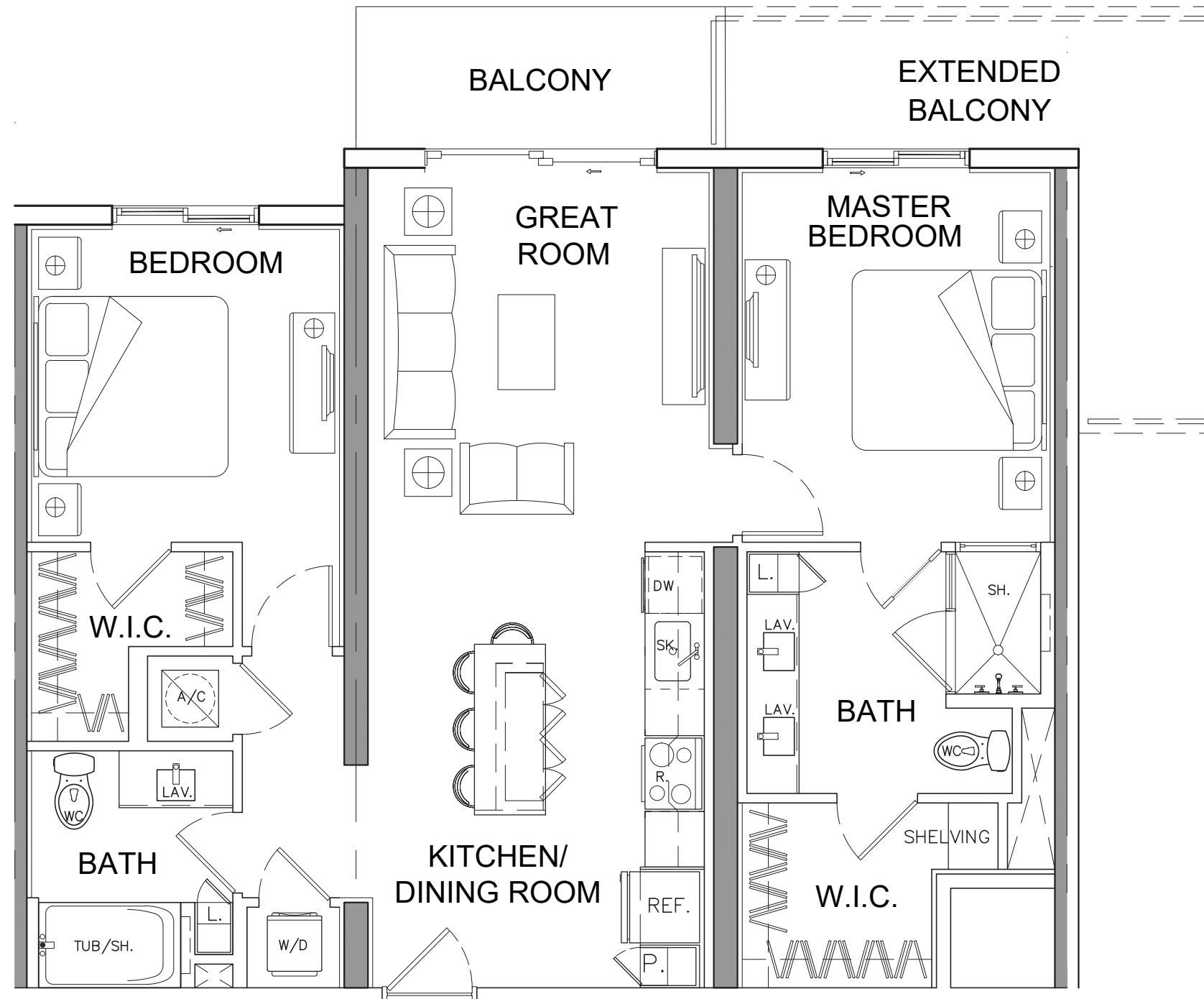
Patricio Javier Orloff, P.A.
Cervera Real Estate
+1.305.726.8155
orloffpat@gmail.com

GROSS A/C AREA = 724 SQ. FT. (1 BD/1 BTH)
(20 DU'S)

All plans, features and amenities depicted herein are based upon preliminary development plans and are subject to change without notice in the manner provided in the offering documents by the developer. No guarantees or representations whatsoever are made that any plans, features, amenities or facilities will be provided or, if provided, will be of the same type, size, location or nature as depicted or described herein. The sketches, renderings, graphic materials, plans, specifications, terms, conditions and statements contained are proposed only. and we reserve the right to modify, revise or withdraw any or all of same in our sole discretion and without prior notice.



NORTH LINE KEY: (04)

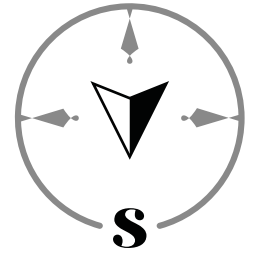


Patricio Javier Orloff, P.A.
 Cervera Real Estate
 +1.305.726.8155
 orloffpat@gmail.com

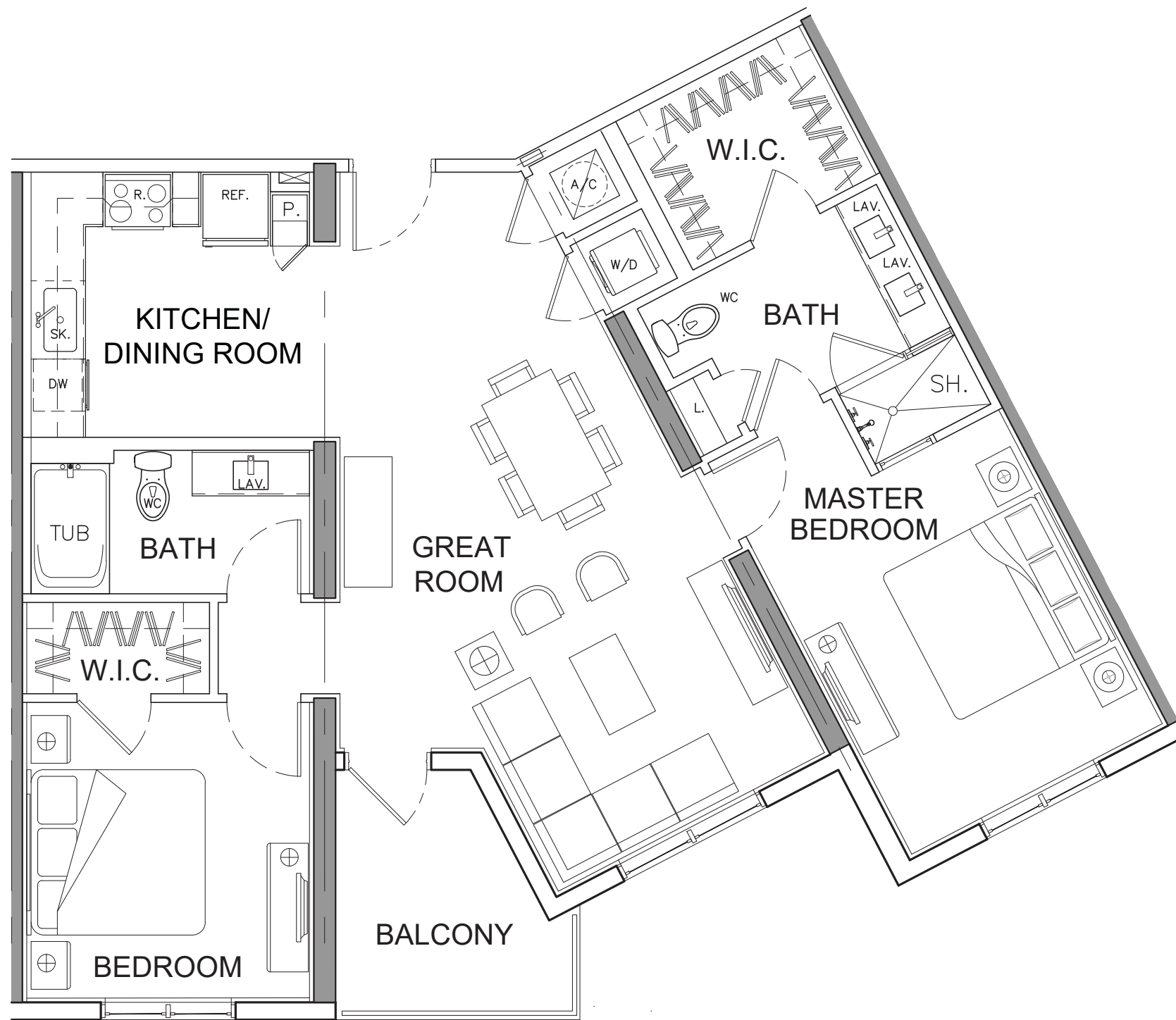
(2 BD/2 BTH)
 GROSS A/C AREA = 1071 SQ. FT. (60 DU'S)
 BALCONY = 65 SQ. FT.

All plans, features and amenities depicted herein are based upon preliminary development plans and are subject to change without notice in the manner provided in the offering documents by the developer. No guarantees or representations whatsoever are made that any plans, features, amenities or facilities will be provided or, if provided, will be of the same type, size, location or nature as depicted or described herein. The sketches, renderings, graphic materials, plans, specifications, terms, conditions and statements contained are proposed only. and we reserve the right to modify, revise or withdraw any or all of same in our sole discretion and without prior notice.

SHOMA
bay



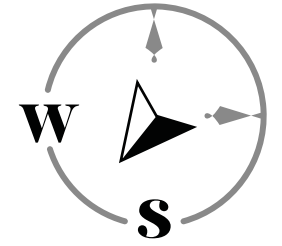
SOUTH LINE KEY: (05)



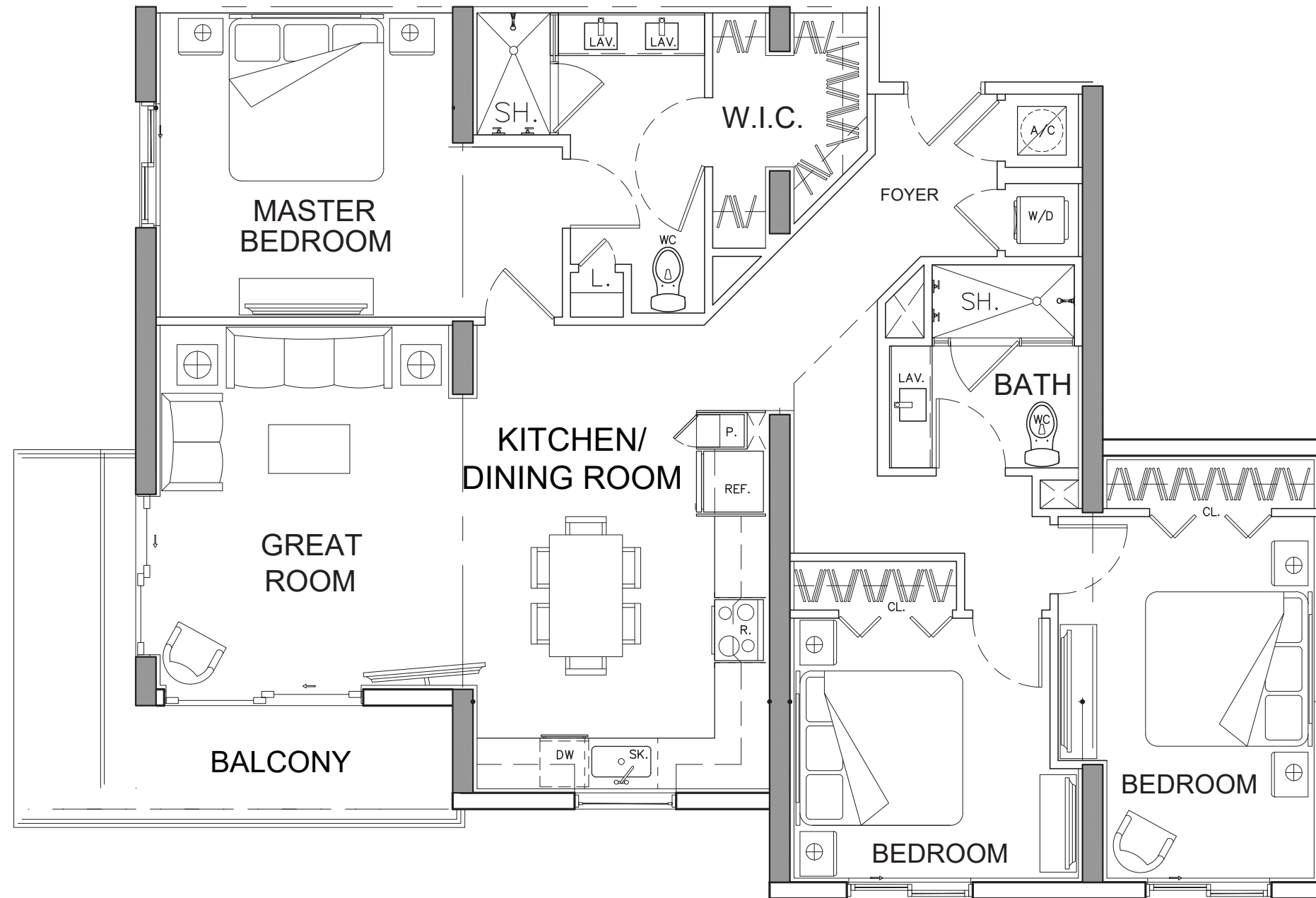
Patricio Javier Orloff, P.A.
Cervera Real Estate
+1.305.726.8155
orloffpat@gmail.com

(2 BD/2 BTH)
GROSS A/C AREA = 1150 SQ. FT. (10 DU'S)
BALCONY = 75 SQ. FT.

All plans, features and amenities depicted herein are based upon preliminary development plans and are subject to change without notice in the manner provided in the offering documents by the developer. No guarantees or representations whatsoever are made that any plans, features, amenities or facilities will be provided or, if provided, will be of the same type, size, location or nature as depicted or described herein. The sketches, renderings, graphic materials, plans, specifications, terms, conditions and statements contained are proposed only. and we reserve the right to modify, revise or withdraw any or all of same in our sole discretion and without prior notice.



SOUTH WEST LINE KEY: (12)



Patricio Javier Orloff, P.A.
Cervera Real Estate
+1.305.726.8155
orloffpat@gmail.com

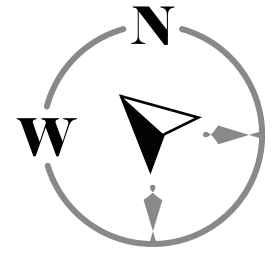
(3 BD/2 BTH)

GROSS A/C AREA = 1447 SQ. FT.
BALCONY = 143 SQ. FT.

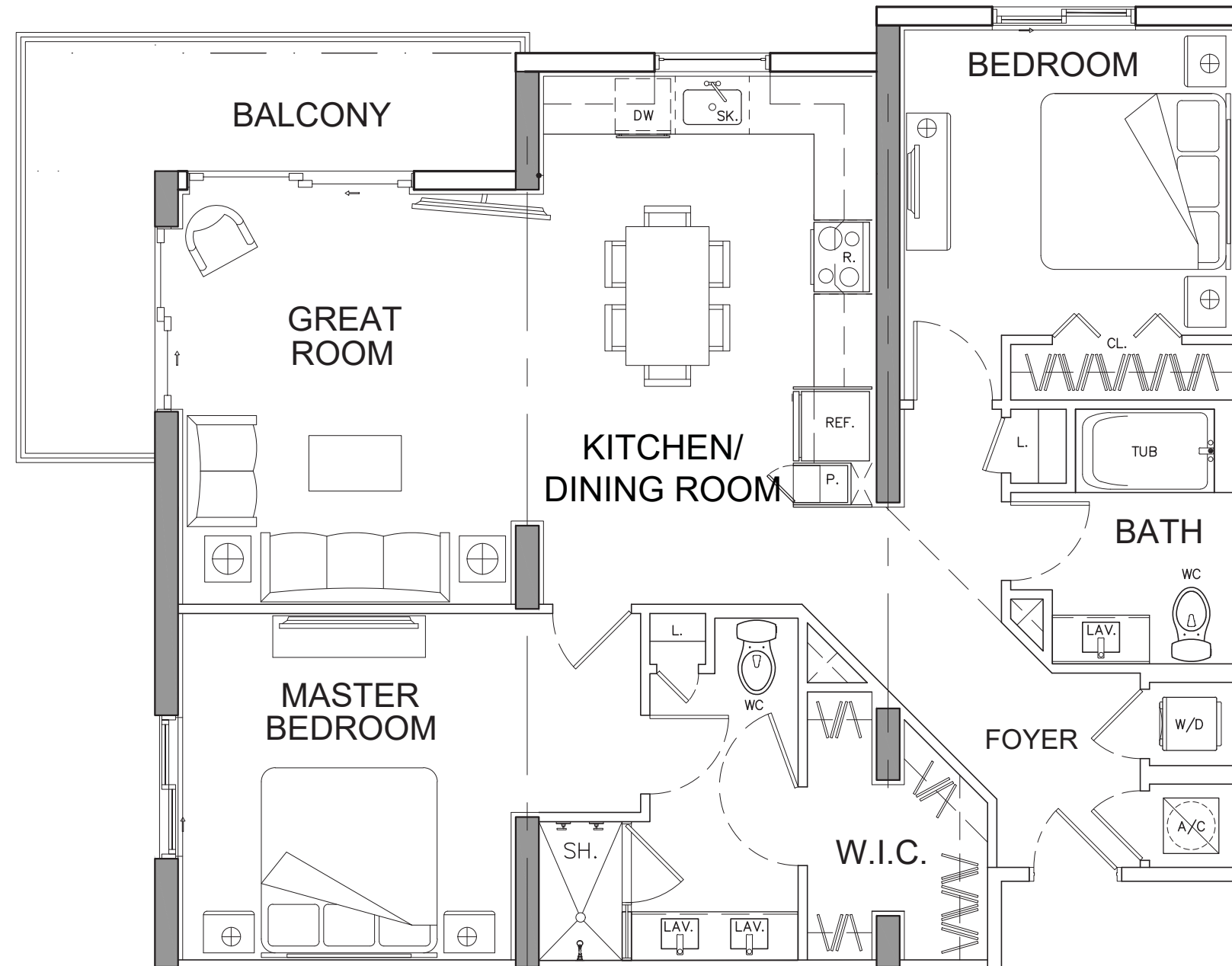
(19 DU'S)

All plans, features and amenities depicted herein are based upon preliminary development plans and are subject to change without notice in the manner provided in the offering documents by the developer. No guarantees or representations whatsoever are made that any plans, features, amenities or facilities will be provided or, if provided, will be of the same type, size, location or nature as depicted or described herein. The sketches, renderings, graphic materials, plans, specifications, terms, conditions and statements contained are proposed only. and we reserve the right to modify, revise or withdraw any or all of same in our sole discretion and without prior notice.

SHOMA
bay



NORTH WEST LINE KEY: (13)



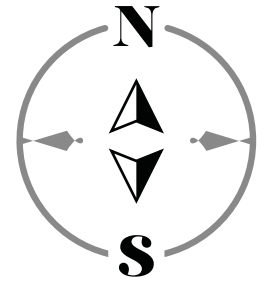
Patricio Javier Orloff, P.A.
Cervera Real Estate
+1.305.726.8155
orloffpat@gmail.com

(2 BD/2 BTH)

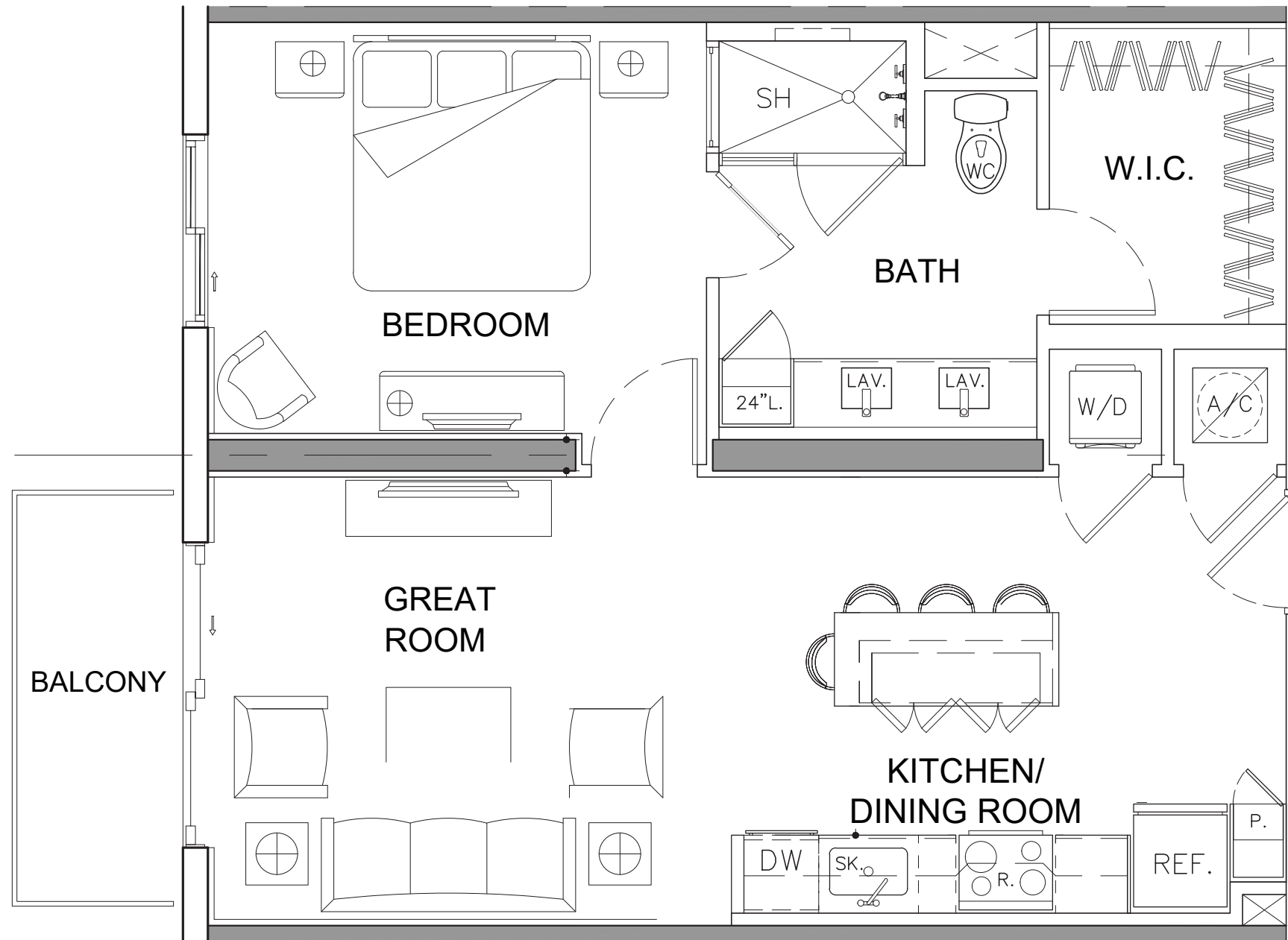
GROSS A/C AREA = 1237 SQ. FT.
BALCONY = 143 SQ. FT.

(20 DU'S)

All plans, features and amenities depicted herein are based upon preliminary development plans and are subject to change without notice in the manner provided in the offering documents by the developer. No guarantees or representations whatsoever are made that any plans, features, amenities or facilities will be provided or, if provided, will be of the same type, size, location or nature as depicted or described herein. The sketches, renderings, graphic materials, plans, specifications, terms, conditions and statements contained are proposed only. and we reserve the right to modify, revise or withdraw any or all of same in our sole discretion and without prior notice.



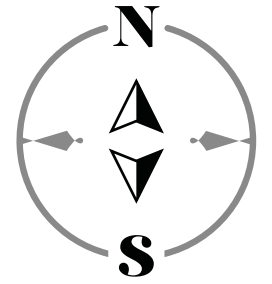
NORTH LINE KEY: (02)
SOUTH LINE KEY: (08)



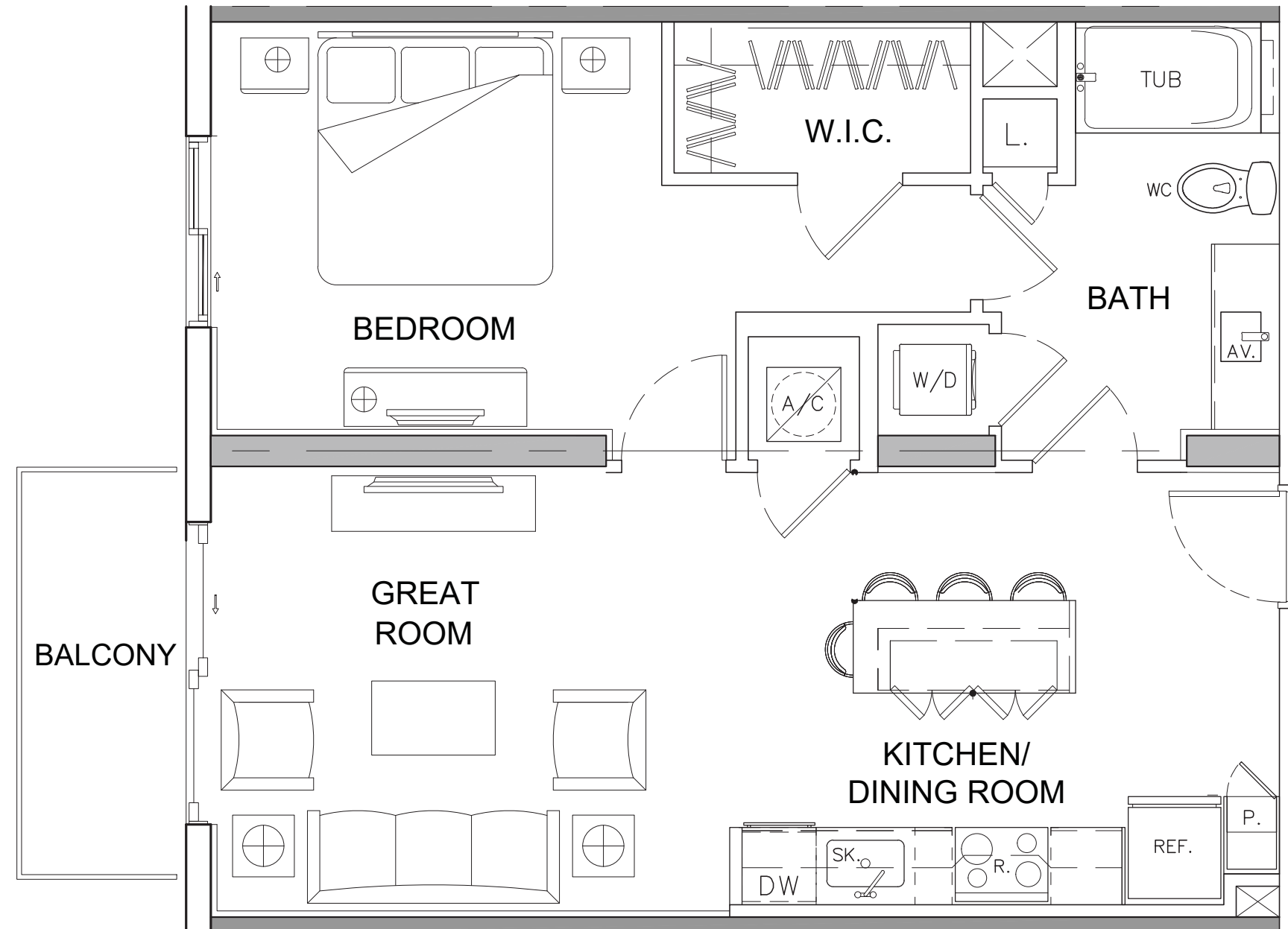
Patricio Javier Orloff, P.A.
Cervera Real Estate
+1.305.726.8155
orloffpat@gmail.com

(1 BD/1 BIH)
GROSS A/C AREA = 750 SQ. FT. (40 DU'S)
BALCONY = 60 SQ. FT.

All plans, features and amenities depicted herein are based upon preliminary development plans and are subject to change without notice in the manner provided in the offering documents by the developer. No guarantees or representations whatsoever are made that any plans, features, amenities or facilities will be provided or, if provided, will be of the same type, size, location or nature as depicted or described herein. The sketches, renderings, graphic materials, plans, specifications, terms, conditions and statements contained are proposed only. and we reserve the right to modify, revise or withdraw any or all of same in our sole discretion and without prior notice.



NORTH LINE KEY: (03)
SOUTH LINE KEY: (07)



Patricio Javier Orloff, P.A.
Cervera Real Estate
+1.305.726.8155
orloffpat@gmail.com

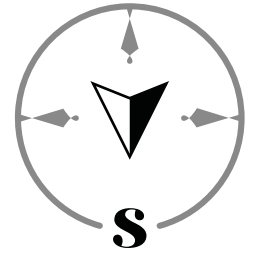
(1 BD/1 BTH)

GROSS A/C AREA = 750 SQ. FT.
BALCONY = 60 SQ. FT.

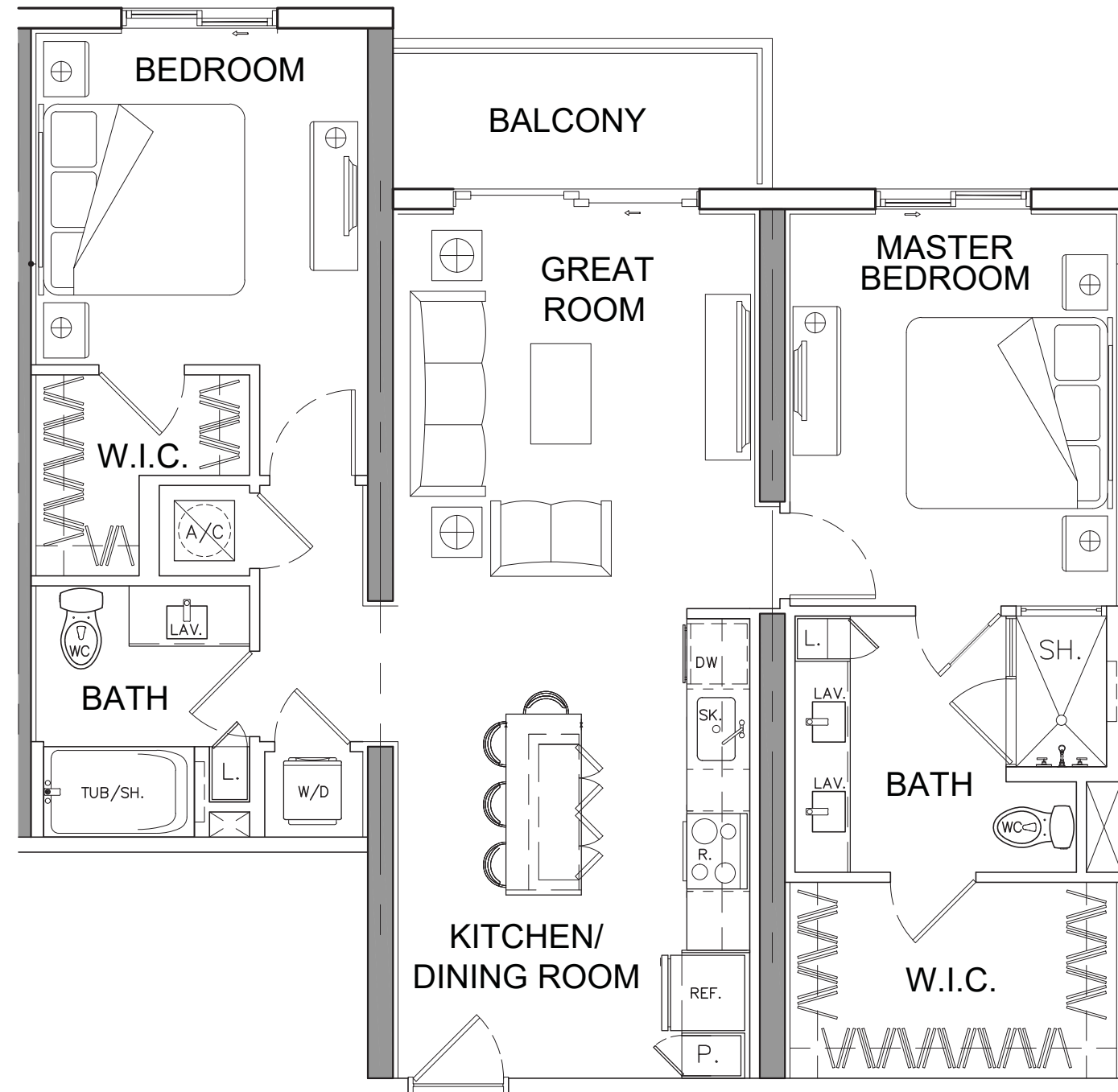
(40 DU'S)

All plans, features and amenities depicted herein are based upon preliminary development plans and are subject to change without notice in the manner provided in the offering documents by the developer. No guarantees or representations whatsoever are made that any plans, features, amenities or facilities will be provided or, if provided, will be of the same type, size, location or nature as depicted or described herein. The sketches, renderings, graphic materials, plans, specifications, terms, conditions and statements contained are proposed only. and we reserve the right to modify, revise or withdraw any or all of same in our sole discretion and without prior notice.

SHOMA
bay



SOUTH LINE KEY: (06 / 09 / 10 / 11)



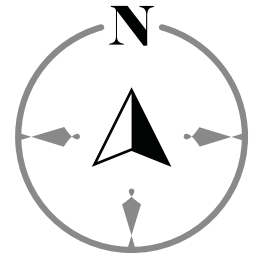
Patricio Javier Orloff, P.A.
Cervera Real Estate
+1.305.726.8155
orloffpat@gmail.com

(2 BD/2 BTH)

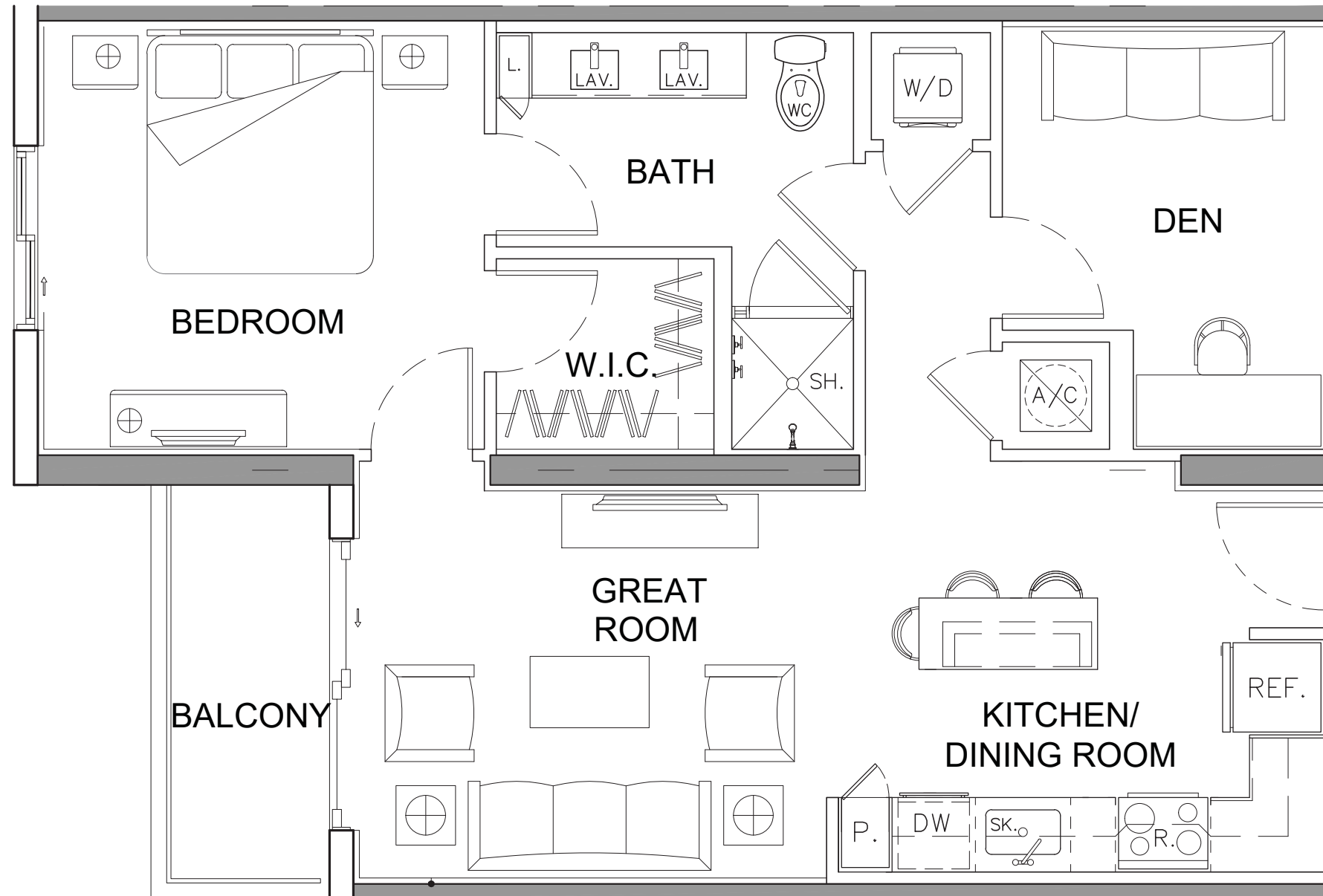
GROSS A/C AREA = 1092 SQ. FT.
BALCONY = 63 SQ. FT.

(40 DU'S)

All plans, features and amenities depicted herein are based upon preliminary development plans and are subject to change without notice in the manner provided in the offering documents by the developer. No guarantees or representations whatsoever are made that any plans, features, amenities or facilities will be provided or, if provided, will be of the same type, size, location or nature as depicted or described herein. The sketches, renderings, graphic materials, plans, specifications, terms, conditions and statements contained are proposed only. and we reserve the right to modify, revise or withdraw any or all of same in our sole discretion and without prior notice.



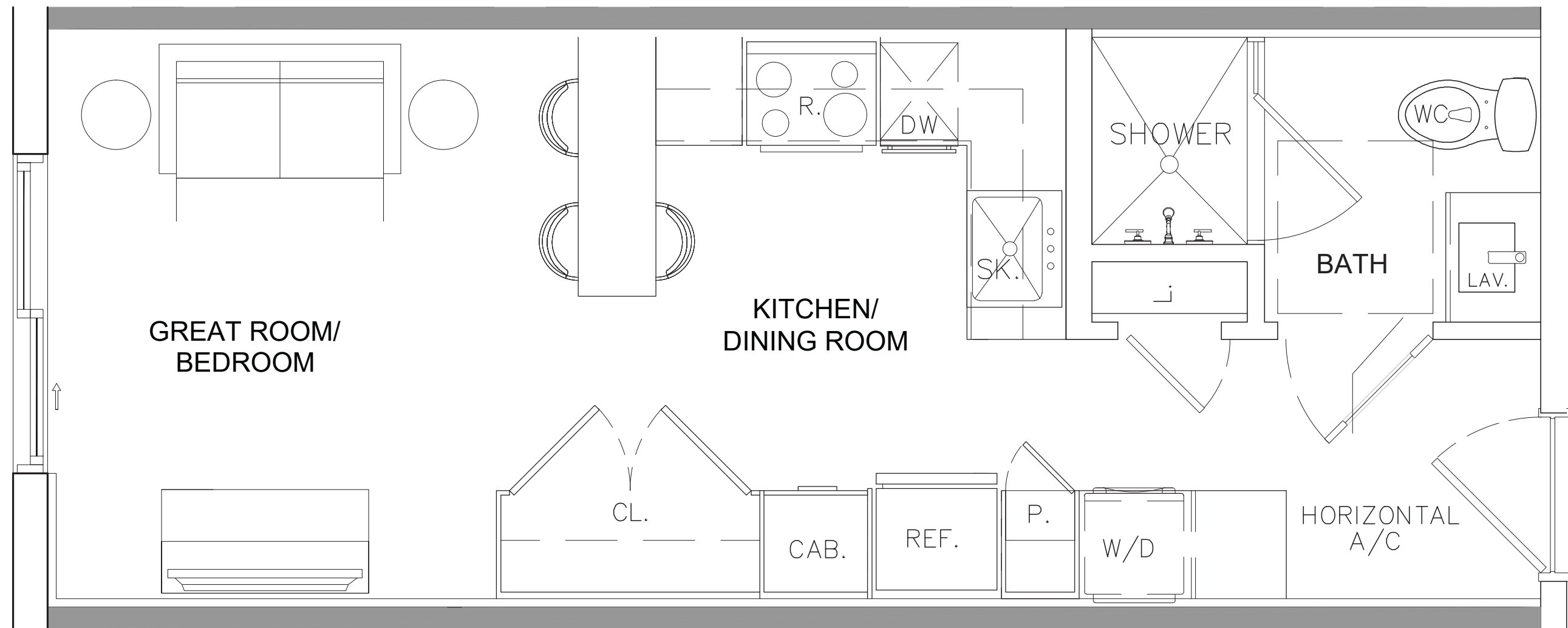
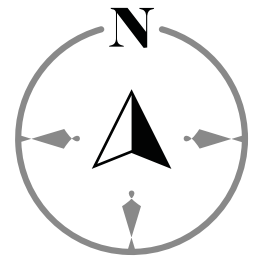
NORTH LINE KEY: (14 / 16)



Patricio Javier Orloff, P.A.
Cervera Real Estate
+1.305.726.8155
orloffpat@gmail.com

(1 BD/1 B III 1 DEN)
GROSS A/C AREA = 827 SQ. FT. (40 DU'S)
BALCONY = 58 SQ. FT.

All plans, features and amenities depicted herein are based upon preliminary development plans and are subject to change without notice in the manner provided in the offering documents by the developer. No guarantees or representations whatsoever are made that any plans, features, amenities or facilities will be provided or, if provided, will be of the same type, size, location or nature as depicted or described herein. The sketches, renderings, graphic materials, plans, specifications, terms, conditions and statements contained are proposed only. and we reserve the right to modify, revise or withdraw any or all of same in our sole discretion and without prior notice.



Patricio Javier Orloff, P.A.
Cervera Real Estate
+1.305.726.8155
orloffpat@gmail.com

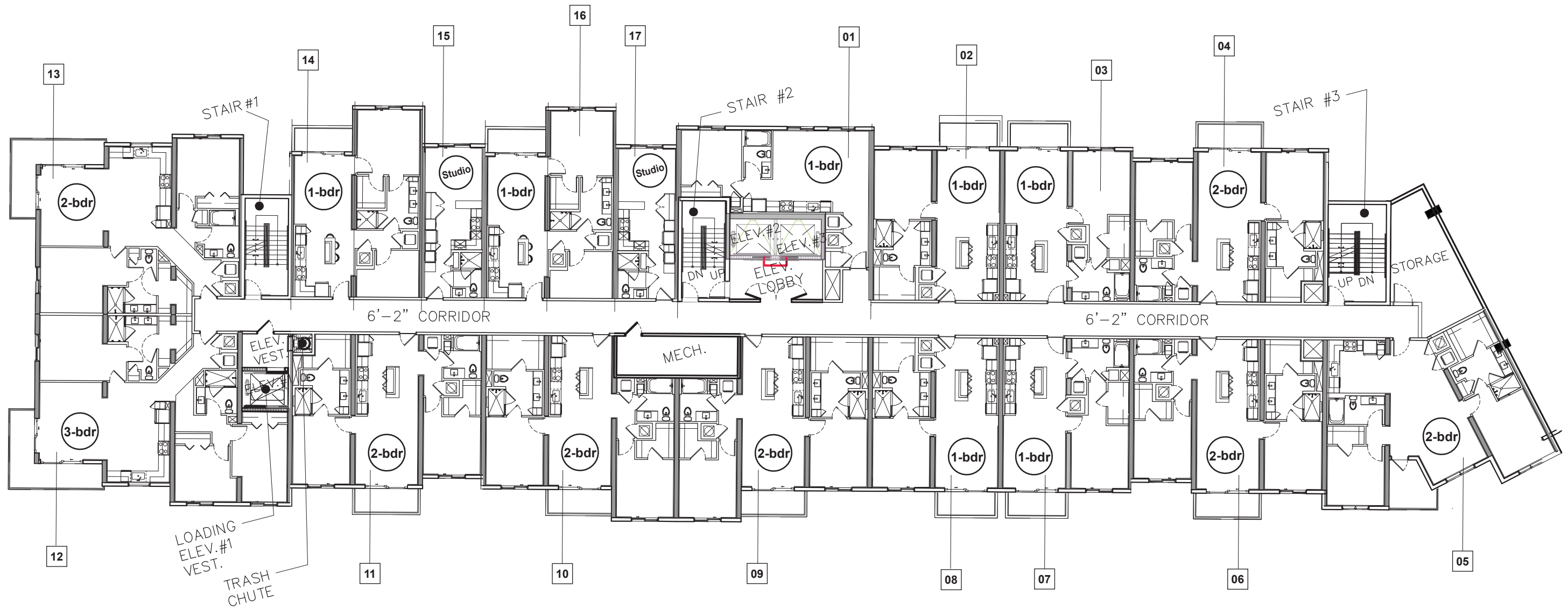
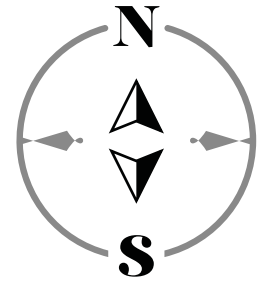
STUDIO

GROSS A/C AREA = 360 SQ. FT.

(0 BD/1 BTH)

(40 DU'S)

All plans, features and amenities depicted herein are based upon preliminary development plans and are subject to change without notice in the manner provided in the offering documents by the developer. No guarantees or representations whatsoever are made that any plans, features, amenities or facilities will be provided or, if provided, will be of the same type, size, location or nature as depicted or described herein. The sketches, renderings, graphic materials, plans, specifications, terms, conditions and statements contained are proposed only. and we reserve the right to modify, revise or withdraw any or all of same in our sole discretion and without prior notice.



Patricio Javier Orloff, P.A.
 Cervera Real Estate
 +1.305.726.8155
 orloffpat@gmail.com

LEVEL 3
 17 UNITS
 70 SPACES

SCALE: 1" = 20'

All plans, features and amenities depicted herein are based upon preliminary development plans and are subject to change without notice in the manner provided in the offering documents by the developer. No guarantees or representations whatsoever are made that any plans, features, amenities or facilities will be provided or, if provided, will be of the same type, size, location or nature as depicted or described herein. The sketches, renderings, graphic materials, plans, specifications, terms, conditions and statements contained are proposed only, and we reserve the right to modify, revise or withdraw any or all of same in our sole discretion and without prior notice.