



Consultas: [info@miamitangoinvestments.com](mailto:info@miamitangoinvestments.com)

Oficinas en Miami - Orlando - Buenos Aires - Montevideo

Visite nuestra web para más información [WWW.MIAMITANGOINVESTMENTS.COM](http://WWW.MIAMITANGOINVESTMENTS.COM)

**ARGENTINA**

+54 - 11 - 5555 - 1427

**URUGUAY**

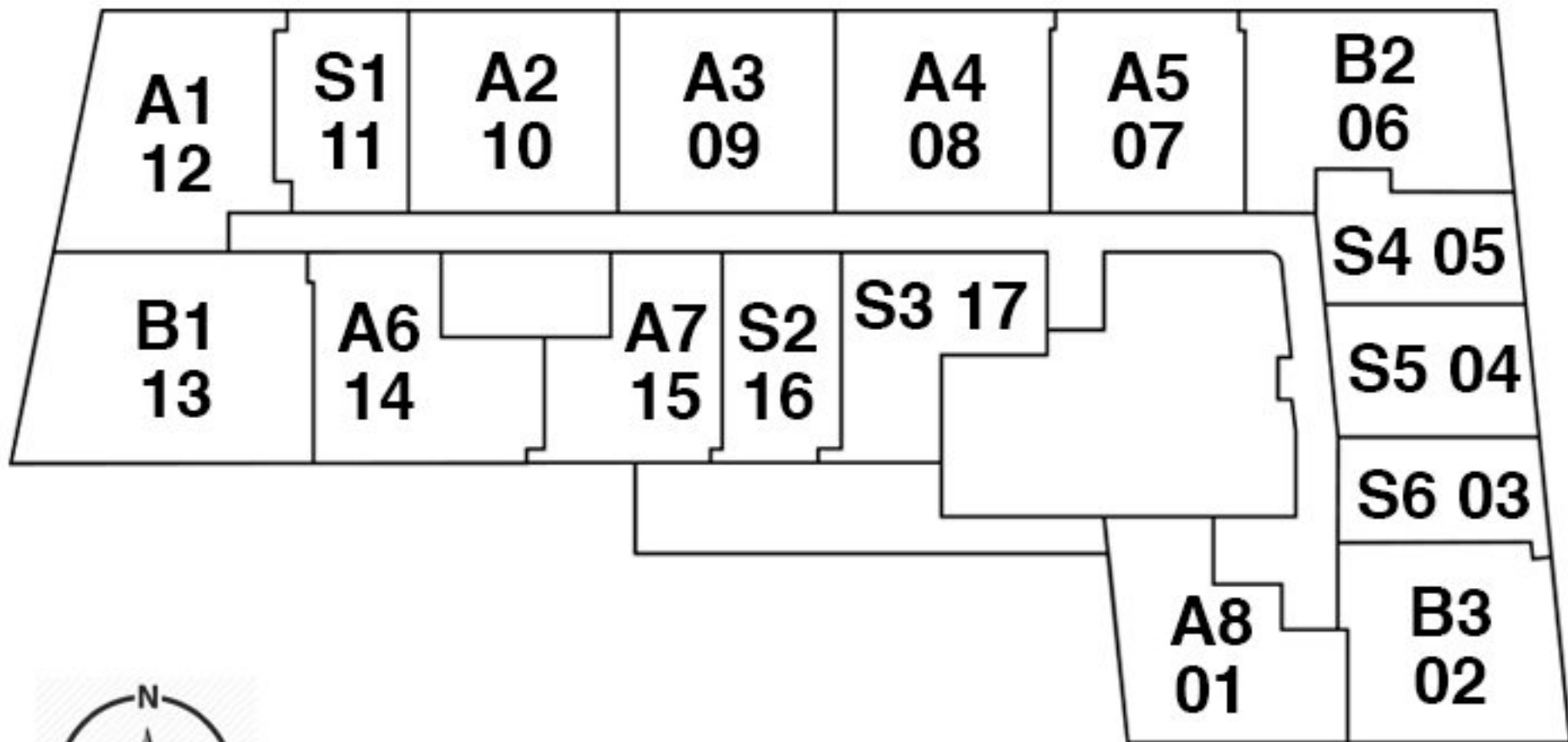
+59 - 8 - 2623 - 6614

**MIAMI**

+1 - 786 - 464 - 8803

**ORLANDO**

+1 - 407 - 641 - 5513



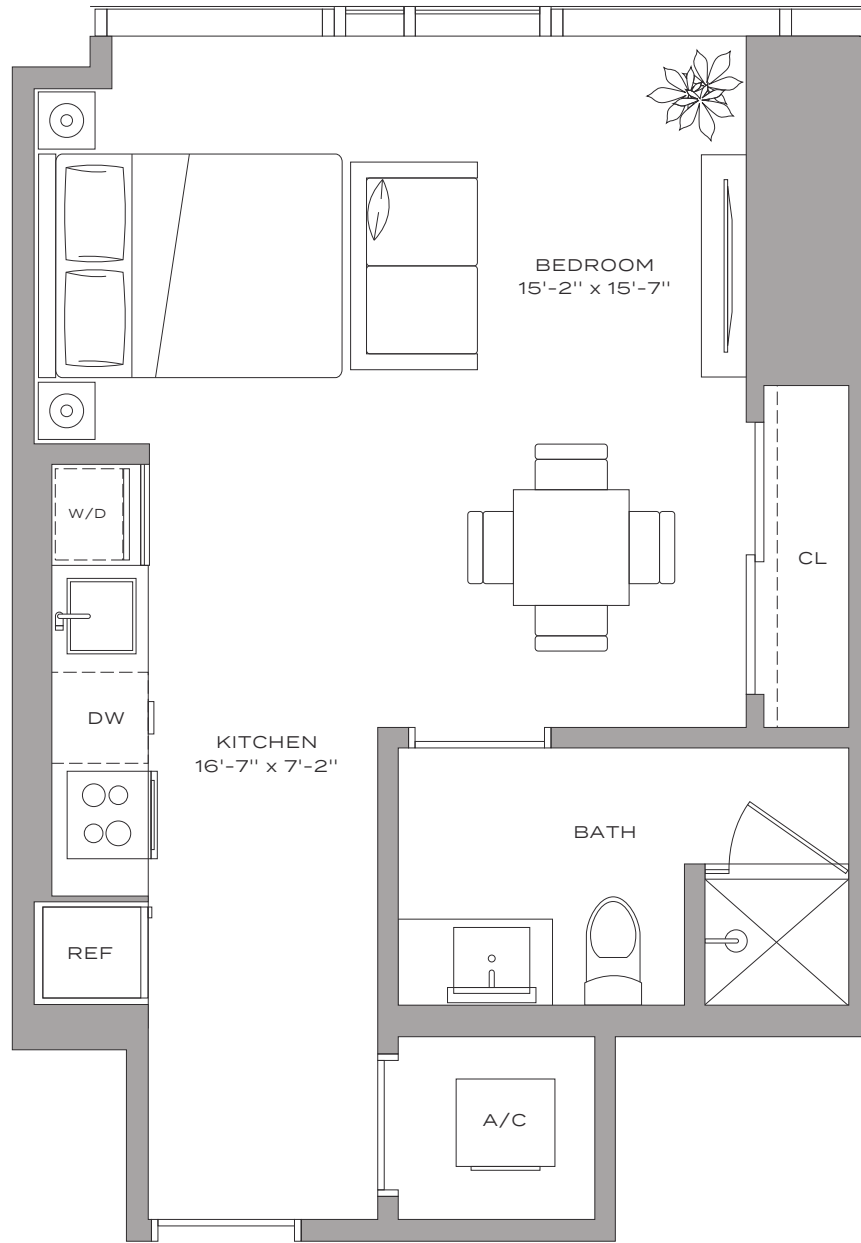
# Residence S1 – 11

# HUB

MIAMI RESIDENCES

STUDIO / 1 BATHROOM

475 SQFT / 44 M<sup>2</sup>



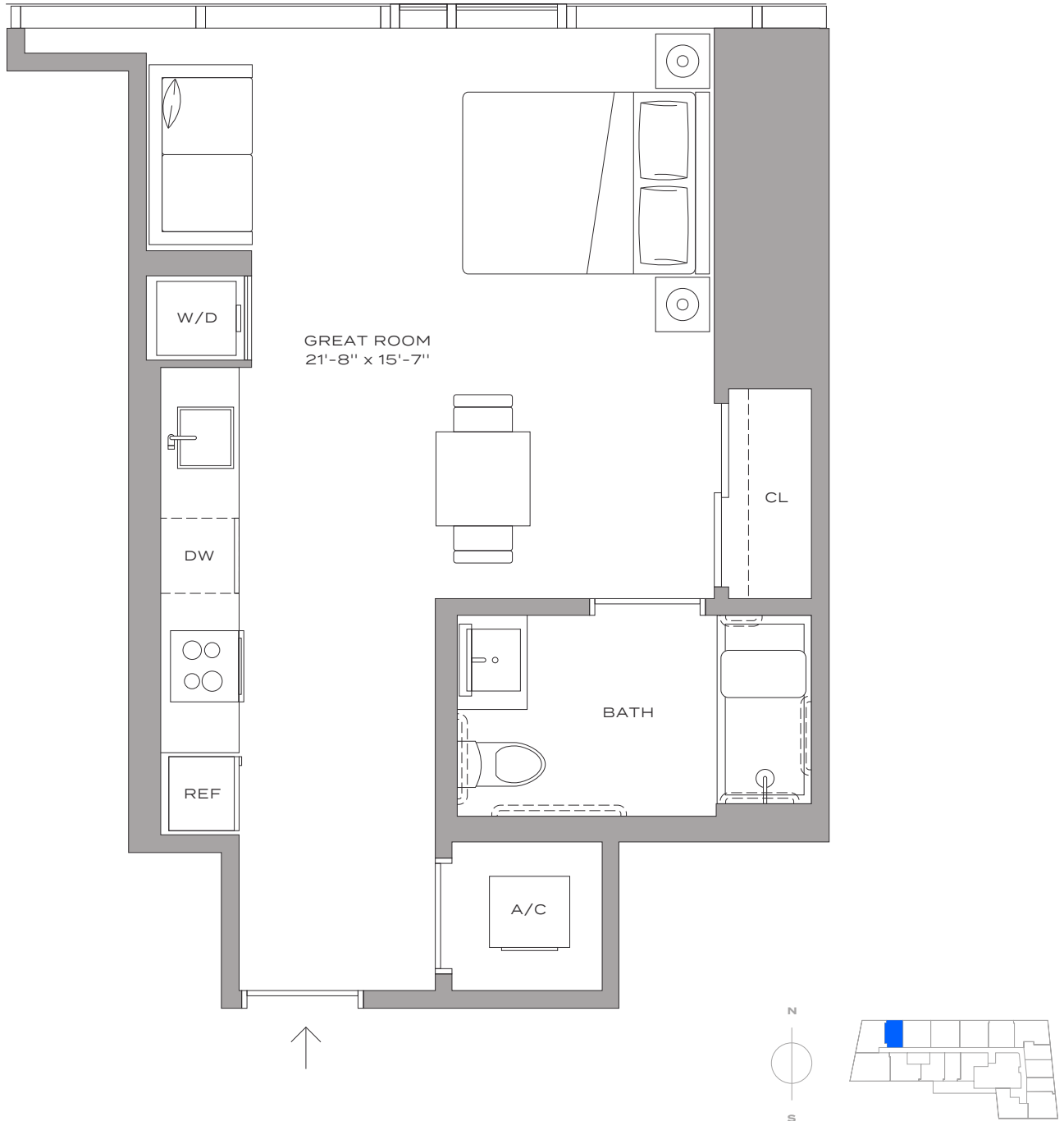
# Residence S1 ADA – 11



MIAMI RESIDENCES

STUDIO / 1 BATHROOM

475 SQFT / 44 M<sup>2</sup>



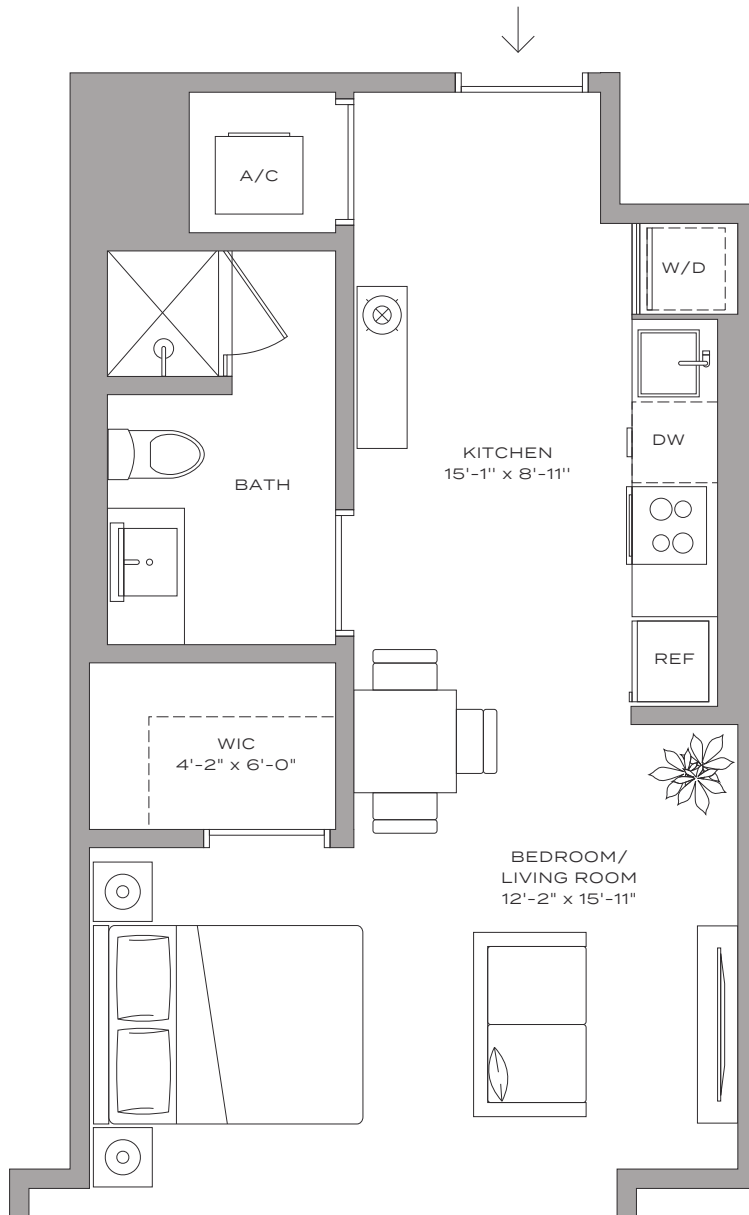
# Residence S2 – 16

# HUB

MIAMI RESIDENCES

STUDIO / 1 BATHROOM

462 SQFT / 43 M<sup>2</sup>



SALES & MARKETING BY  
**ONEWORLD**  
PROPERTIES

The John Buck Company

FVP FLORIDAVALE  
PARTNERS

BH GROUP

PEBB ENTERPRISES  
SINCE 2011

Stated dimensions are measured to the exterior boundaries of the exterior walls and the centerline of interior demising walls and in fact vary from the dimensions that would be determined by using the description and definition of the "Unit" set forth in the Declaration (which generally only includes the interior airspace between the perimeter walls and excludes interior structural components). For your reference, the area of the Unit, determined in accordance with those defined unit boundaries, is 1,044 square feet. Note that measurements of rooms set forth on this floor plan are generally taken at the greatest points of each given room (as if the room were a perfect rectangle), without regard for any cutouts. Accordingly, the area of the actual room will typically be smaller than the product obtained by multiplying the stated length times width. All dimensions are approximate and may vary with actual construction, and all floor plans and development plans are subject to change.

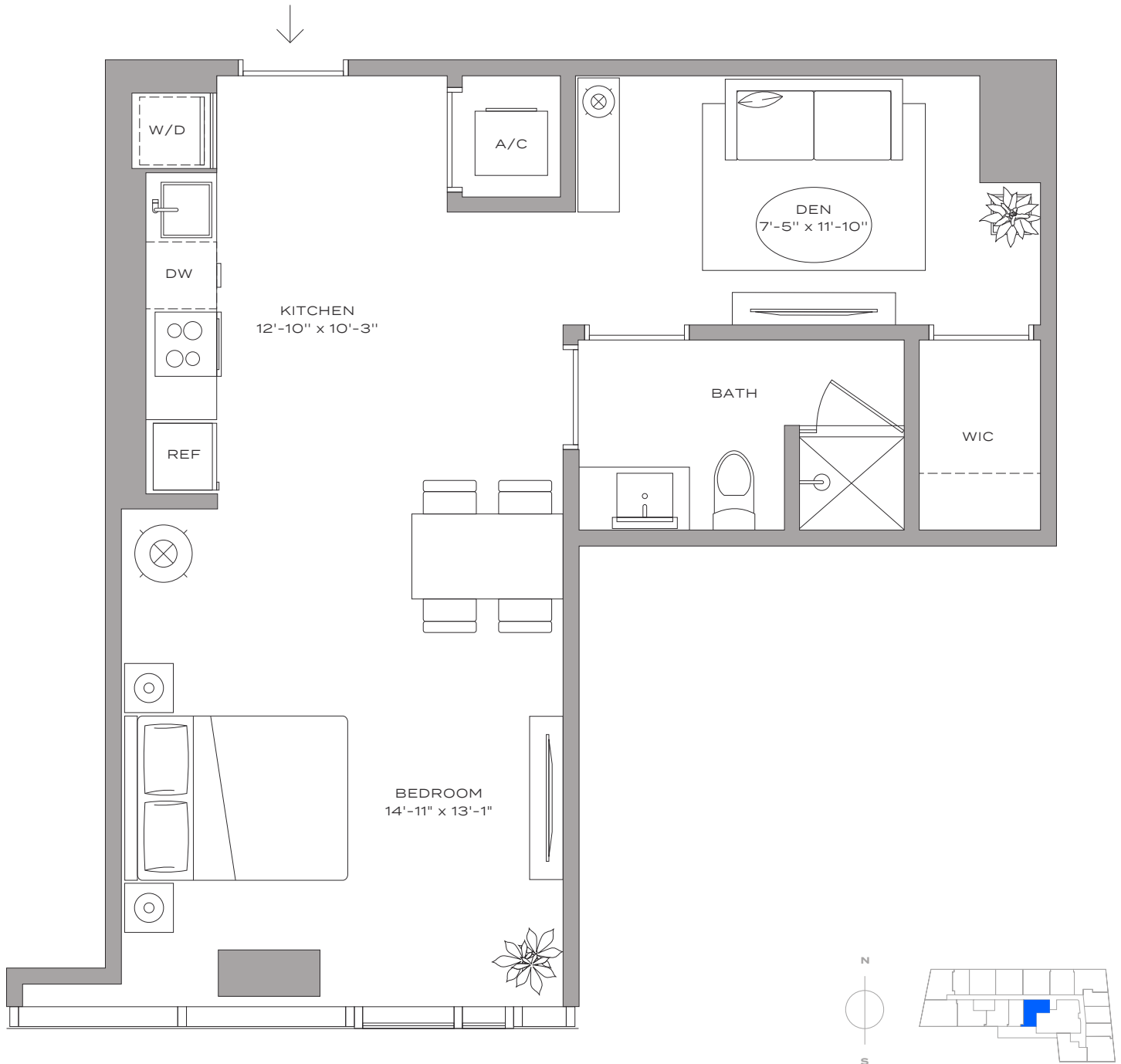
# Residence S3 - 17

# HUB

MIAMI RESIDENCES

STUDIO + DEN / 1 BATHROOM

589 SQFT / 55 M<sup>2</sup>



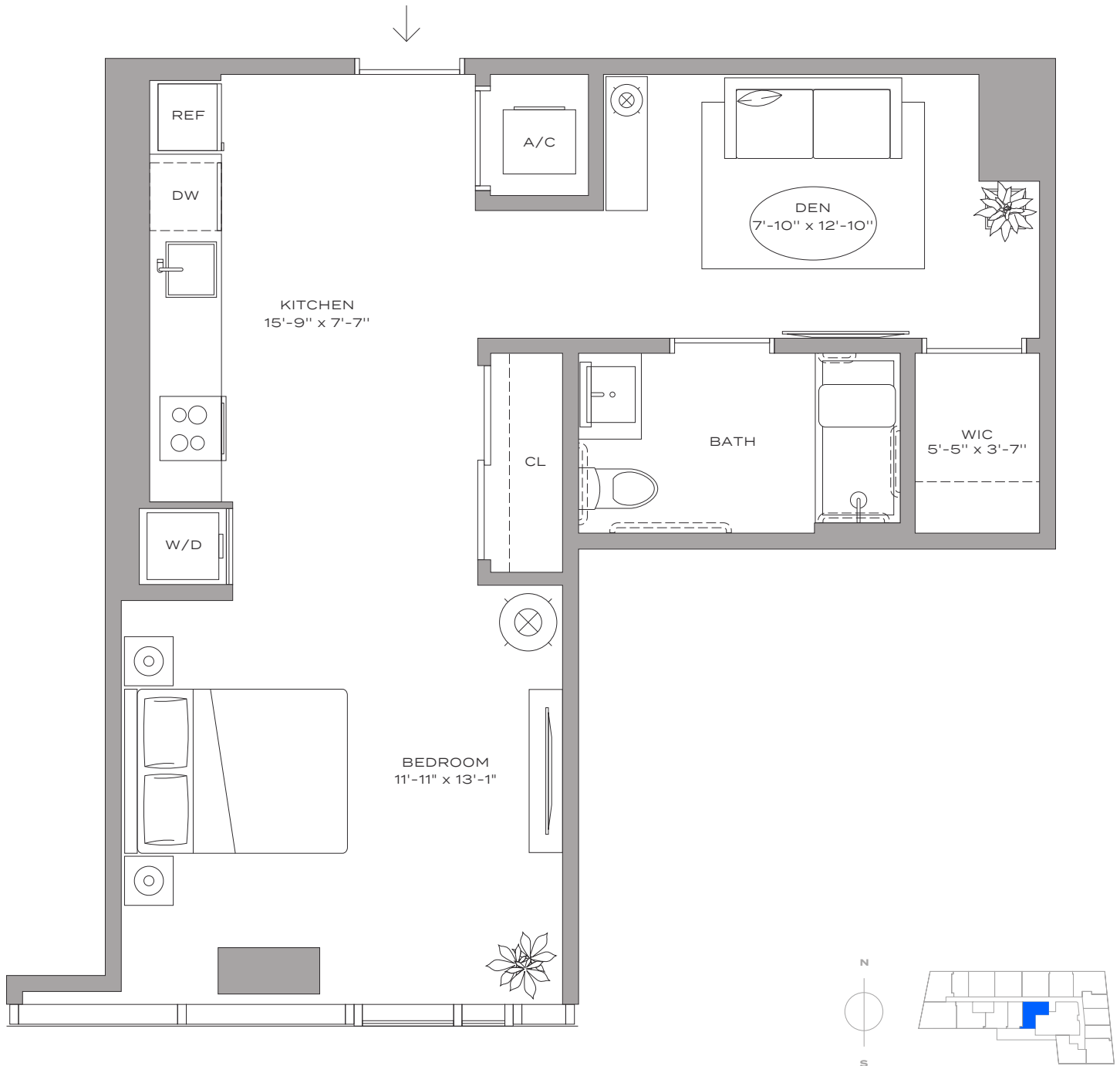
# Residence S3 ADA - 17

# HUB

MIAMI RESIDENCES

STUDIO + DEN / 1 BATHROOM

589 SQFT / 55 M<sup>2</sup>



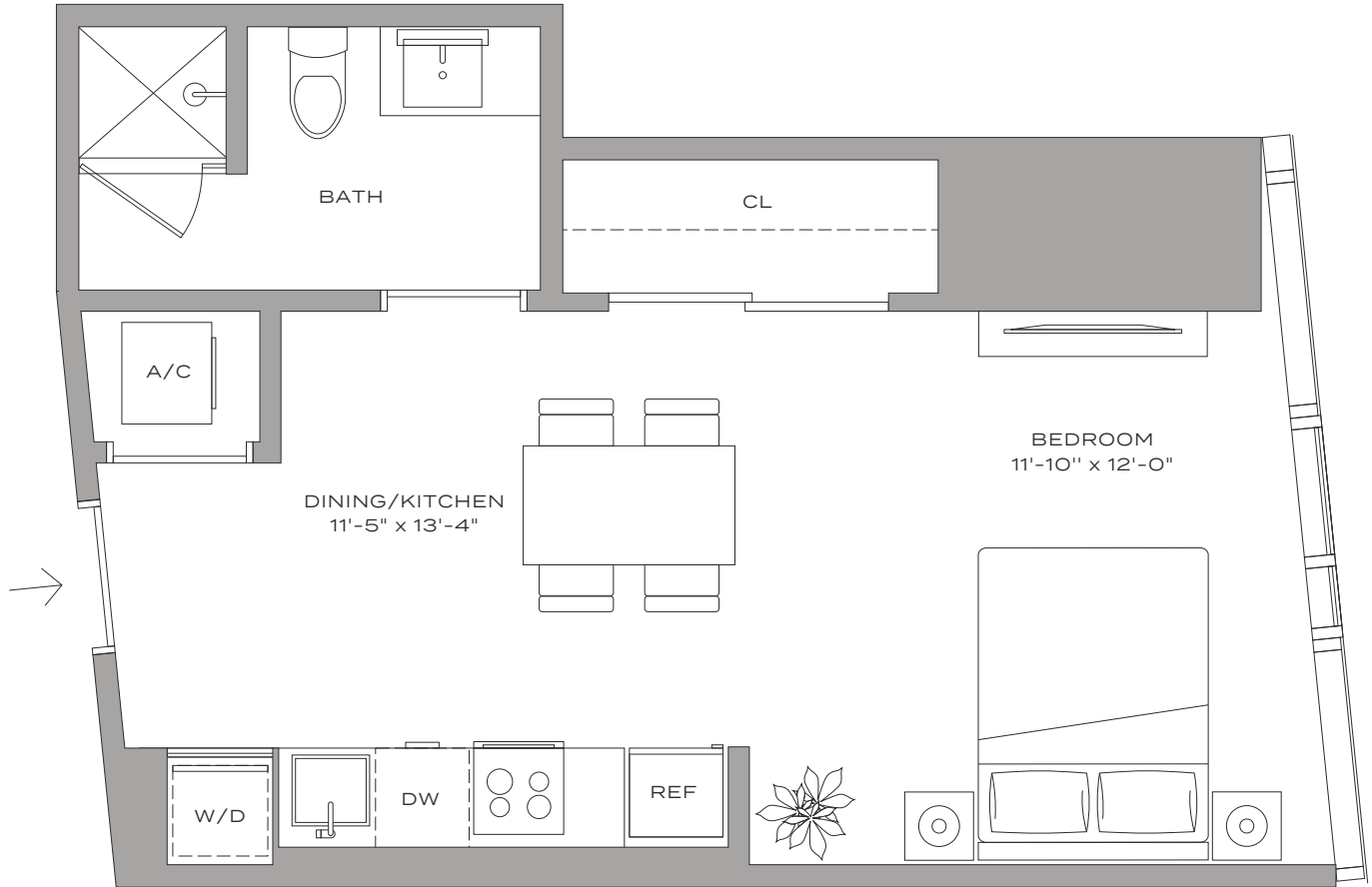
# Residence S4 – 05

# HUB

MIAMI RESIDENCES

STUDIO / 1 BATHROOM

439 SQFT / 41 M<sup>2</sup>





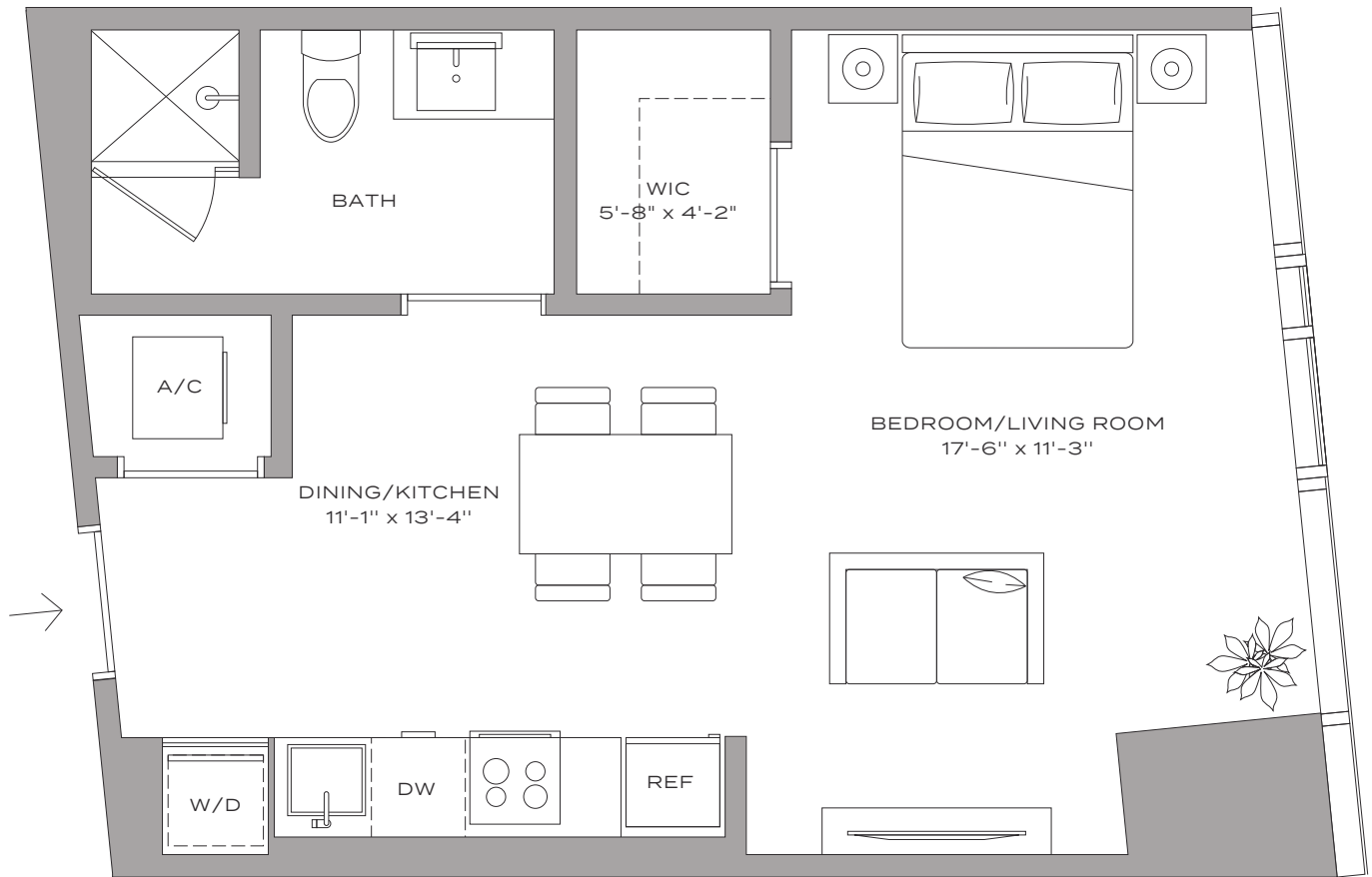
# Residence S5 – 04

# HUB

MIAMI RESIDENCES

STUDIO / 1 BATHROOM

469 SQFT / 44 M<sup>2</sup>



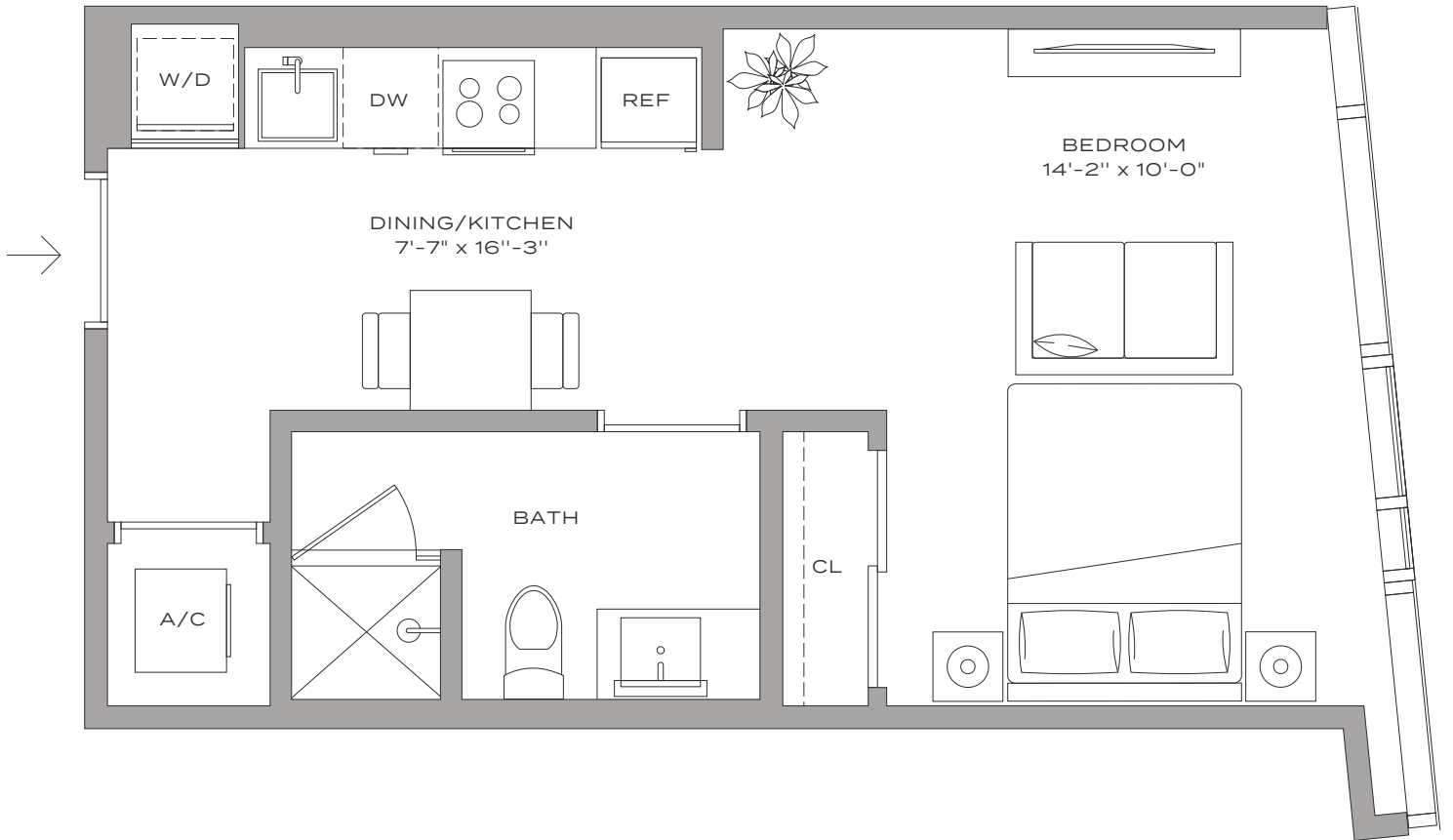
# Residence S6 – 03

# HUB

MIAMI RESIDENCES

STUDIO / 1 BATHROOM

394 SQFT / 37 M<sup>2</sup>



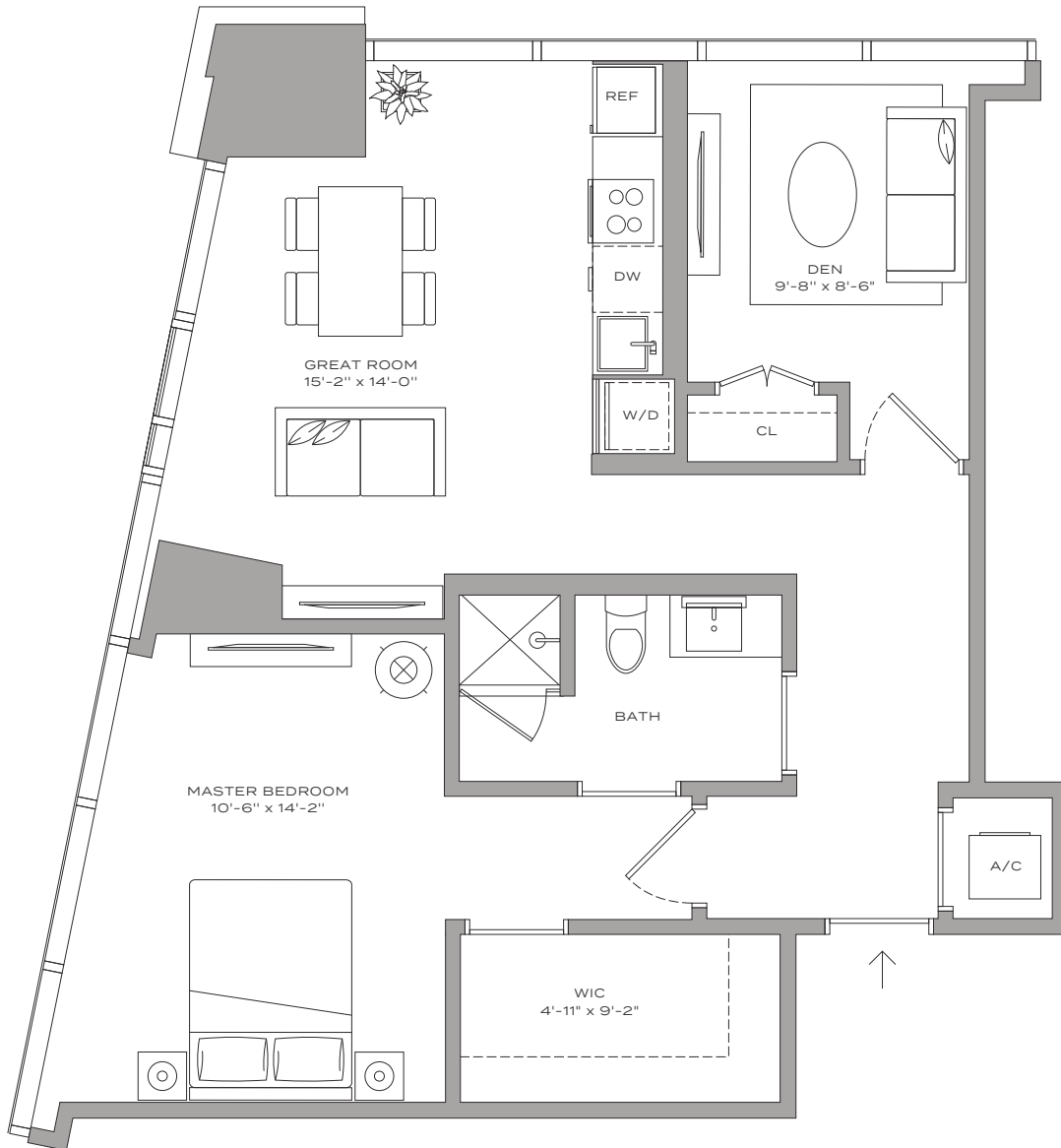
# Residence A1 - 12

# HUB

MIAMI RESIDENCES

1 BEDROOM + DEN | 1 BATHROOM

799 SQFT | 74 M<sup>2</sup>



SALES & MARKETING BY  
**ONWORLD**  
PROPERTIES

The John Buck Company

FVP FLORIDAVALE  
PARTNERS

BH GROUP

PEBB ENTERPRISES  
REAL ESTATE

Stated dimensions are measured to the exterior boundaries of the exterior walls and the centerline of interior demising walls and in fact vary from the dimensions that would be determined by using the description and definition of the "Unit" set forth in the Declaration (which generally only includes the interior airspace between the perimeter walls and excludes interior structural components). For your reference, the area of the Unit, determined in accordance with those defined unit boundaries, is 1,044 square feet. Note that measurements of rooms set forth on this floor plan are generally taken at the greatest points of each given room (as if the room were a perfect rectangle), without regard for any cutouts. Accordingly, the area of the actual room will typically be smaller than the product obtained by multiplying the stated length times width. All dimensions are approximate and may vary with actual construction, and all floor plans and development plans are subject to change.

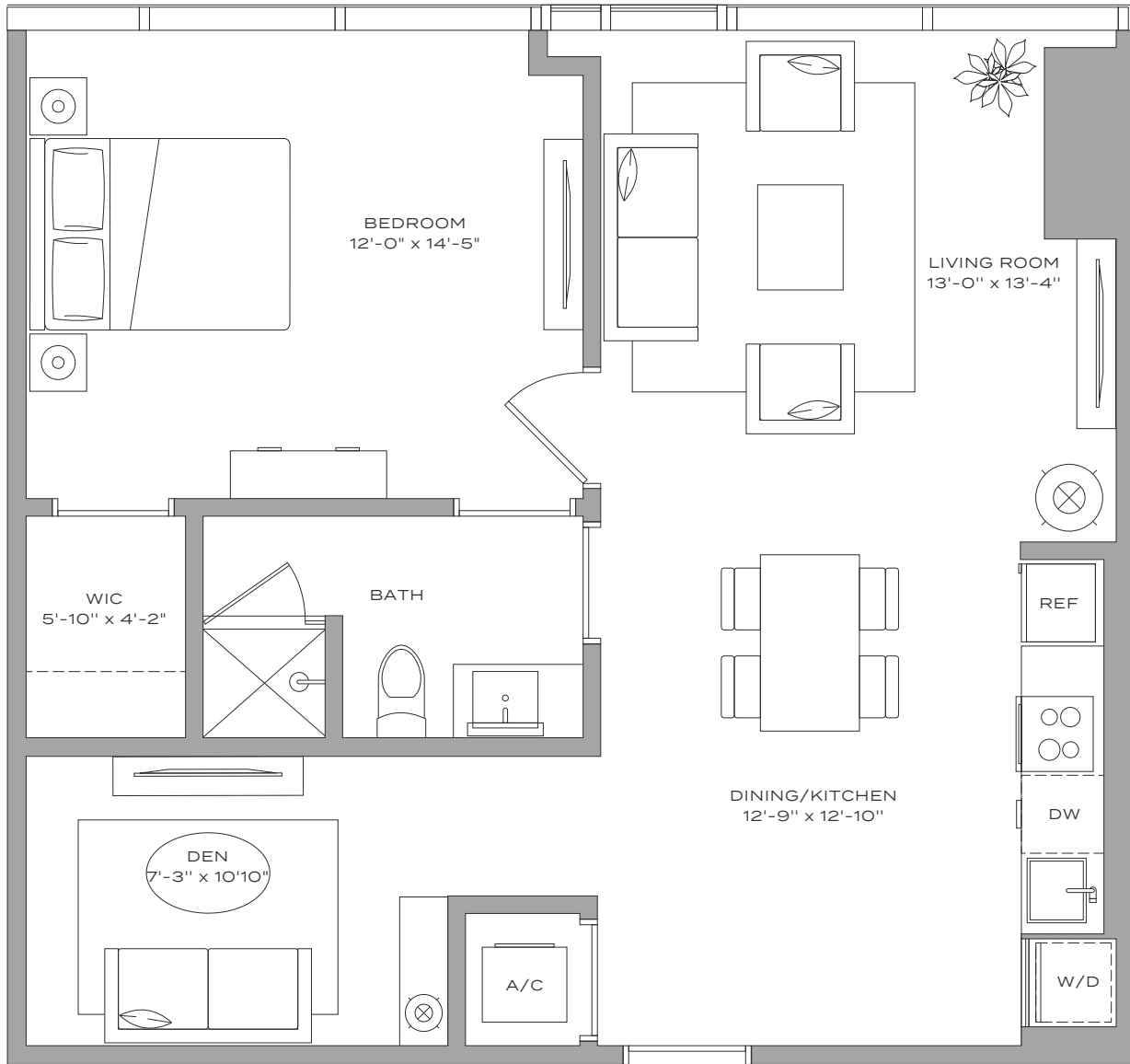
# Residence A2 - 10

# HUB

MIAMI RESIDENCES

1 BEDROOM + DEN | 1 BATHROOM

757 SQFT | 70 M<sup>2</sup>



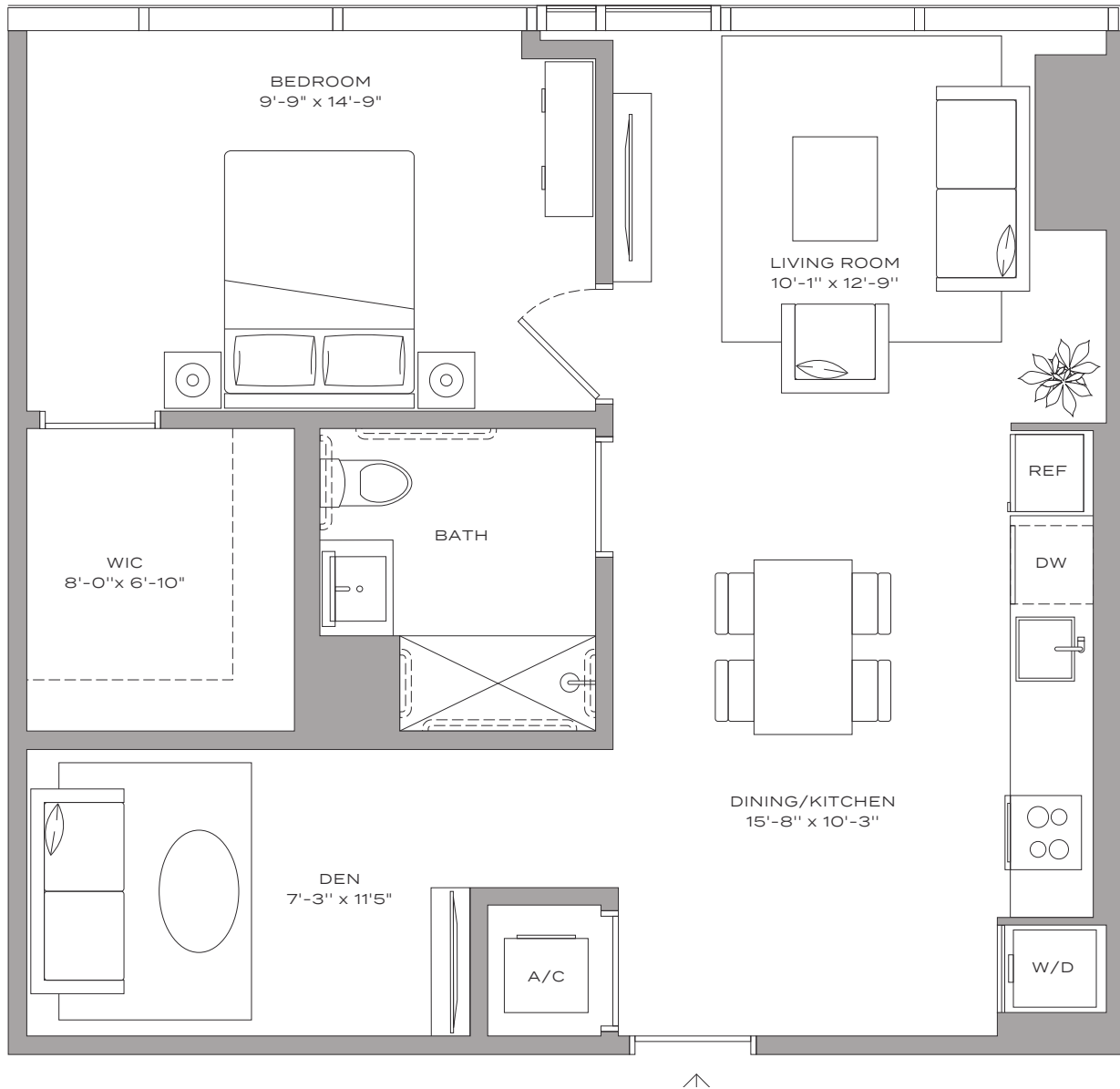
# Residence A2 ADA – 10

# HUB

MIAMI RESIDENCES

1 BEDROOM + DEN | 1 BATHROOM

757 SQFT | 70 M<sup>2</sup>



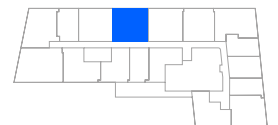
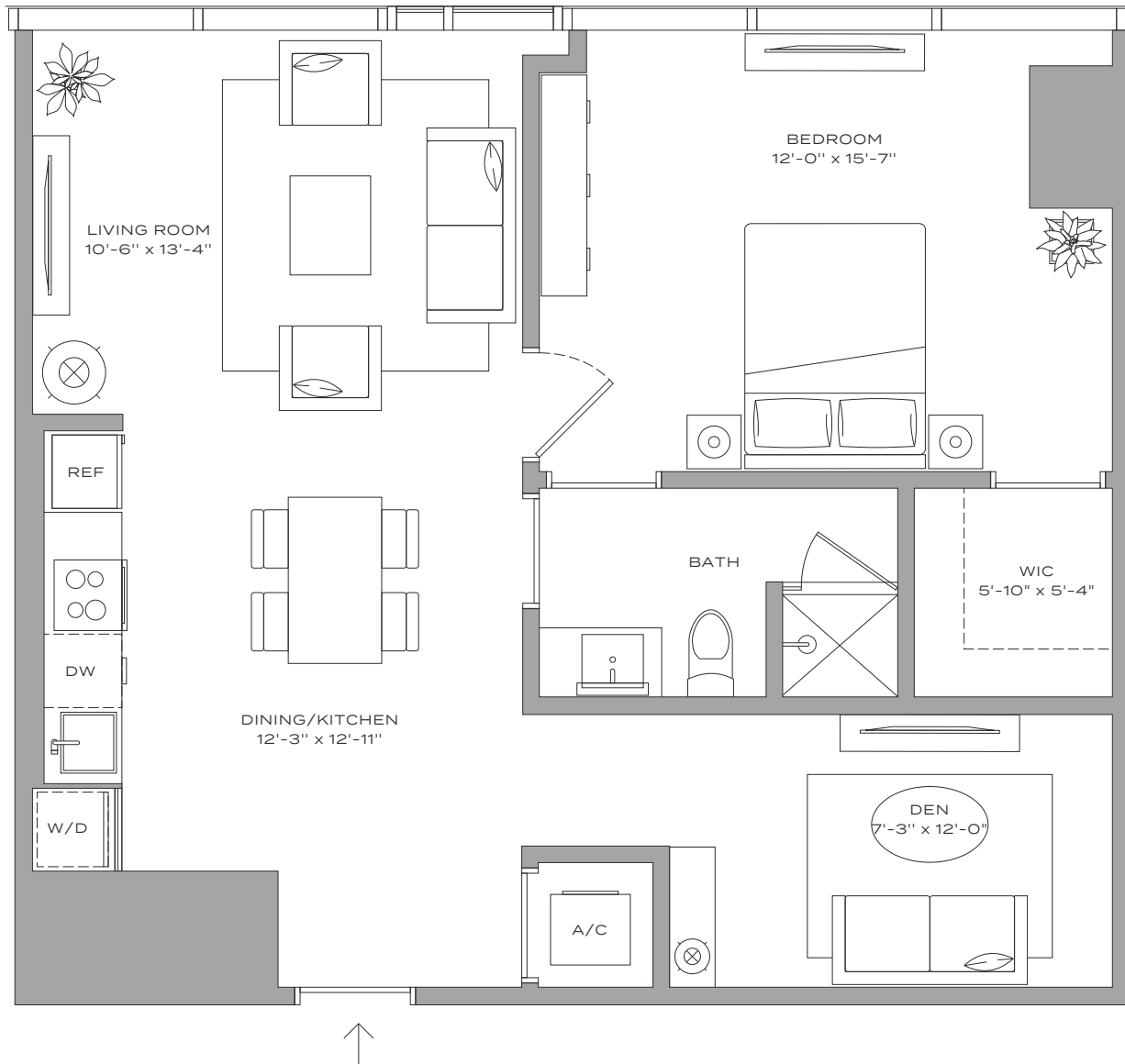
# Residence A3 - 09

# HUB

MIAMI RESIDENCES

1 BEDROOM + DEN | 1 BATHROOM

791 SQFT | 73 M<sup>2</sup>



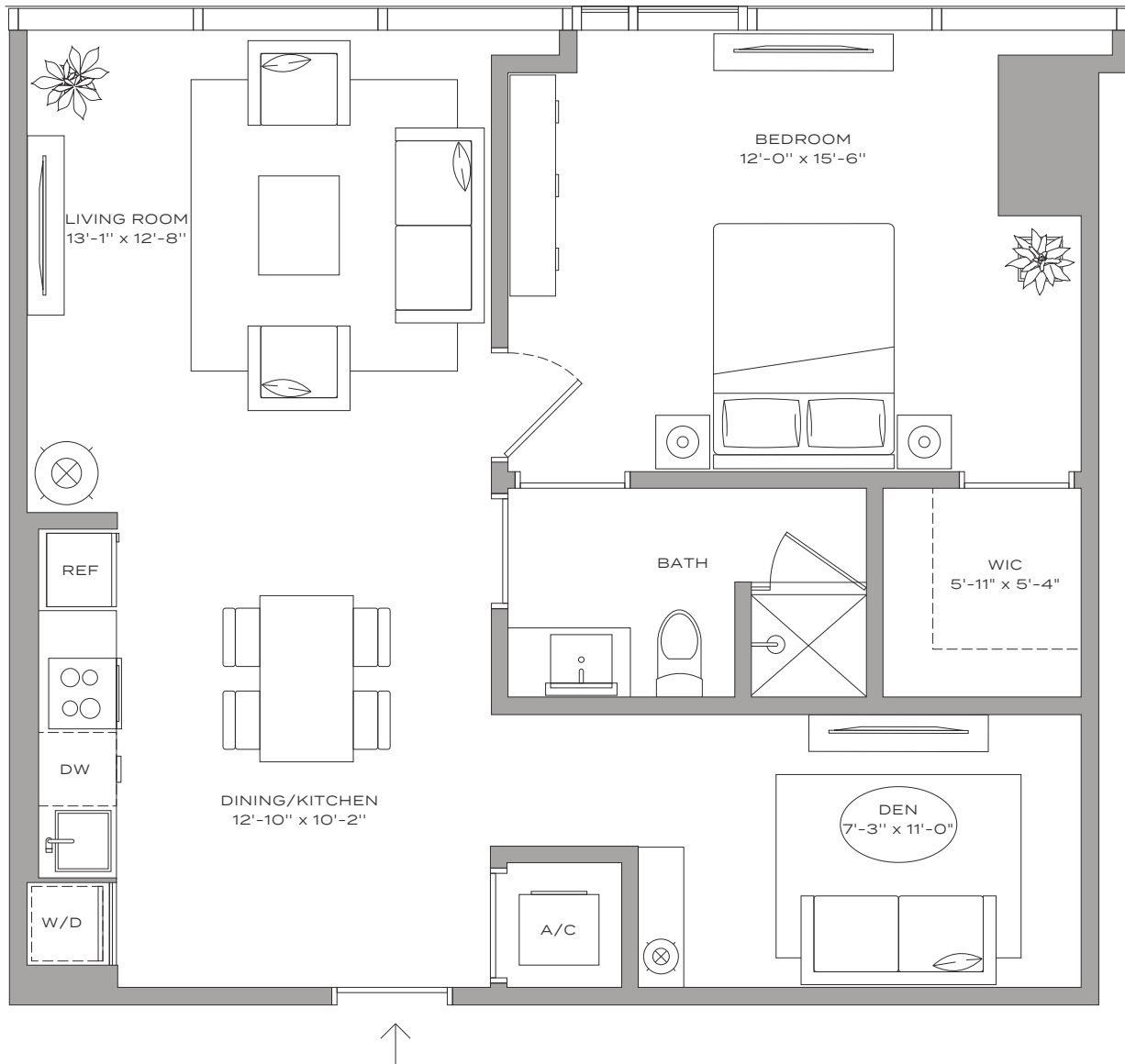
# Residence A4 – 08

# HUB

MIAMI RESIDENCES

1 BEDROOM + DEN | 1 BATHROOM

774 SQFT | 72 M<sup>2</sup>



SALES & MARKETING BY  
**ONeworld**  
PROPERTIES

The John Buck Company

FVP FLORIDAVALE  
PARTNERS

BH GROUP

PEBB ENTERPRISES  
Since 2011

Stated dimensions are measured to the exterior boundaries of the exterior walls and the centerline of interior demising walls and in fact vary from the dimensions that would be determined by using the description and definition of the "Unit" set forth in the Declaration (which generally only includes the interior airspace between the perimeter walls and excludes interior structural components). For your reference, the area of the Unit, determined in accordance with those defined unit boundaries, is 1,044 square feet. Note that measurements of rooms set forth on this floor plan are generally taken at the greatest points of each given room (as if the room were a perfect rectangle), without regard for any cutouts. Accordingly, the area of the actual room will typically be smaller than the product obtained by multiplying the stated length times width. All dimensions are approximate and may vary with actual construction, and all floor plans and development plans are subject to change.

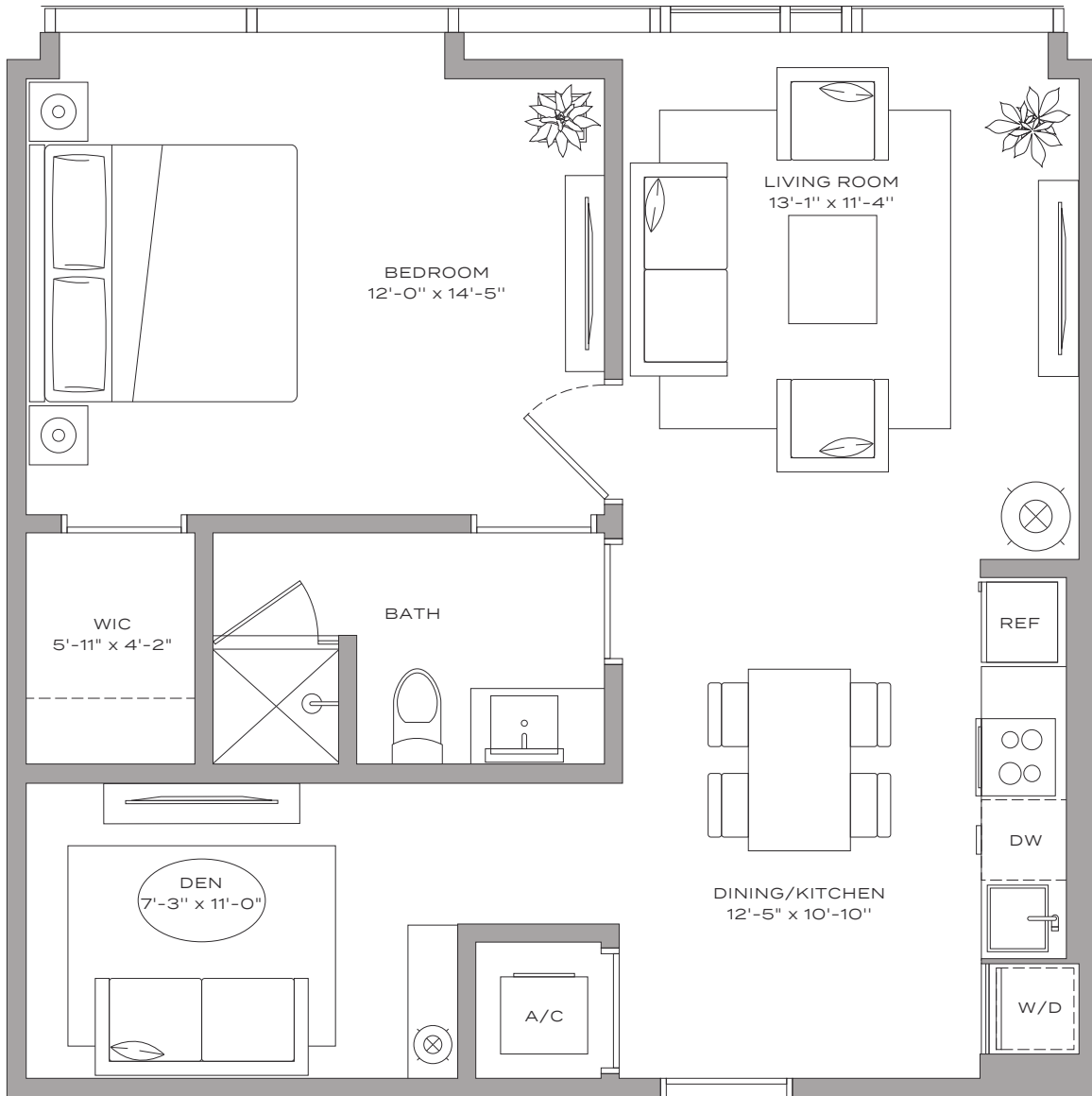
# Residence A5 – 07

# HUB

MIAMI RESIDENCES

1 BEDROOM + DEN | 1 BATHROOM

705 SQFT | 65 M<sup>2</sup>





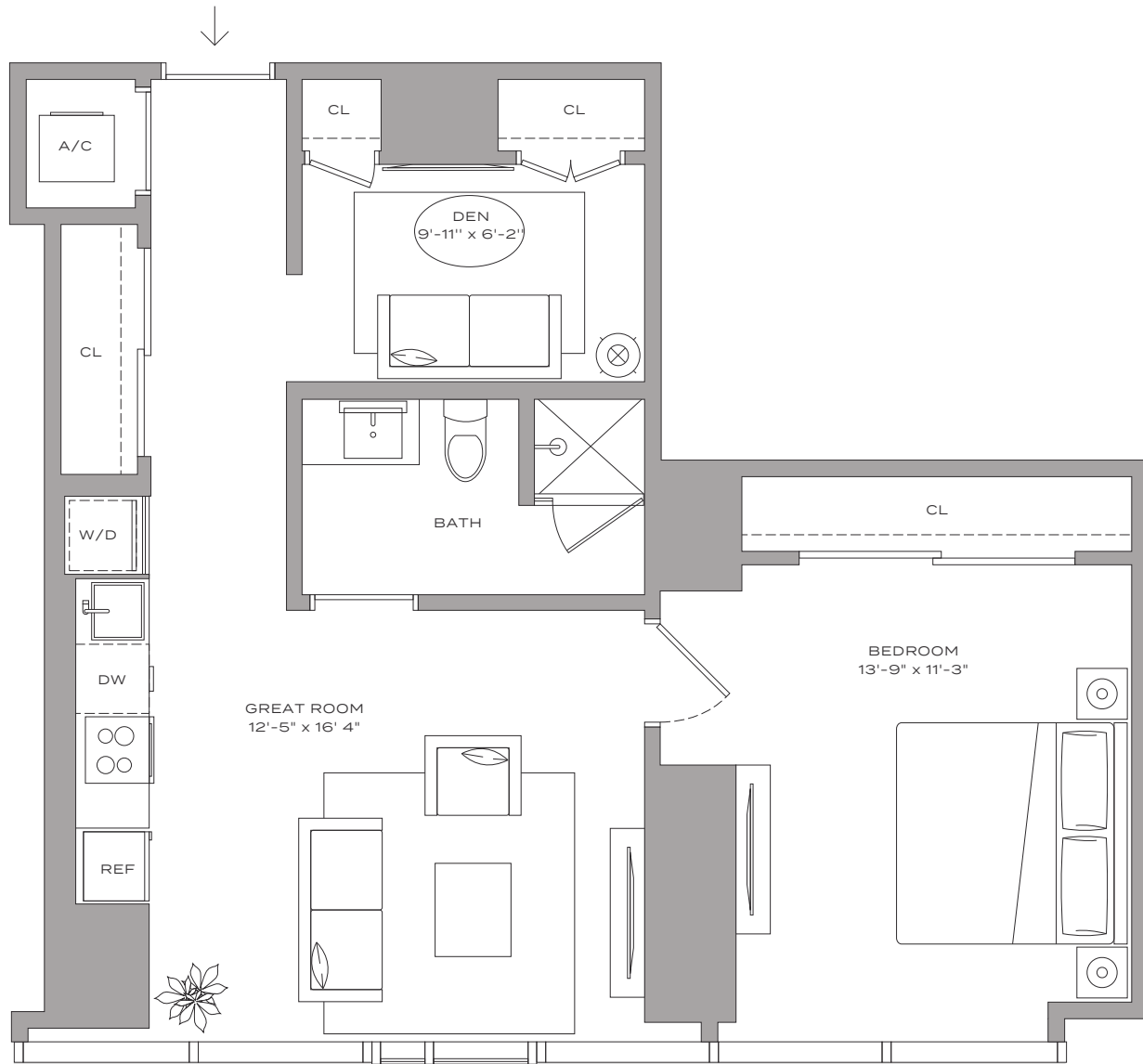
# Residence A6 - 14

# HUB

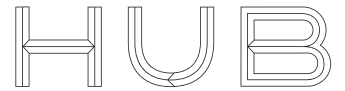
MIAMI RESIDENCES

1 BEDROOM + DEN | 1 BATHROOM

732 SQFT | 68 M<sup>2</sup>



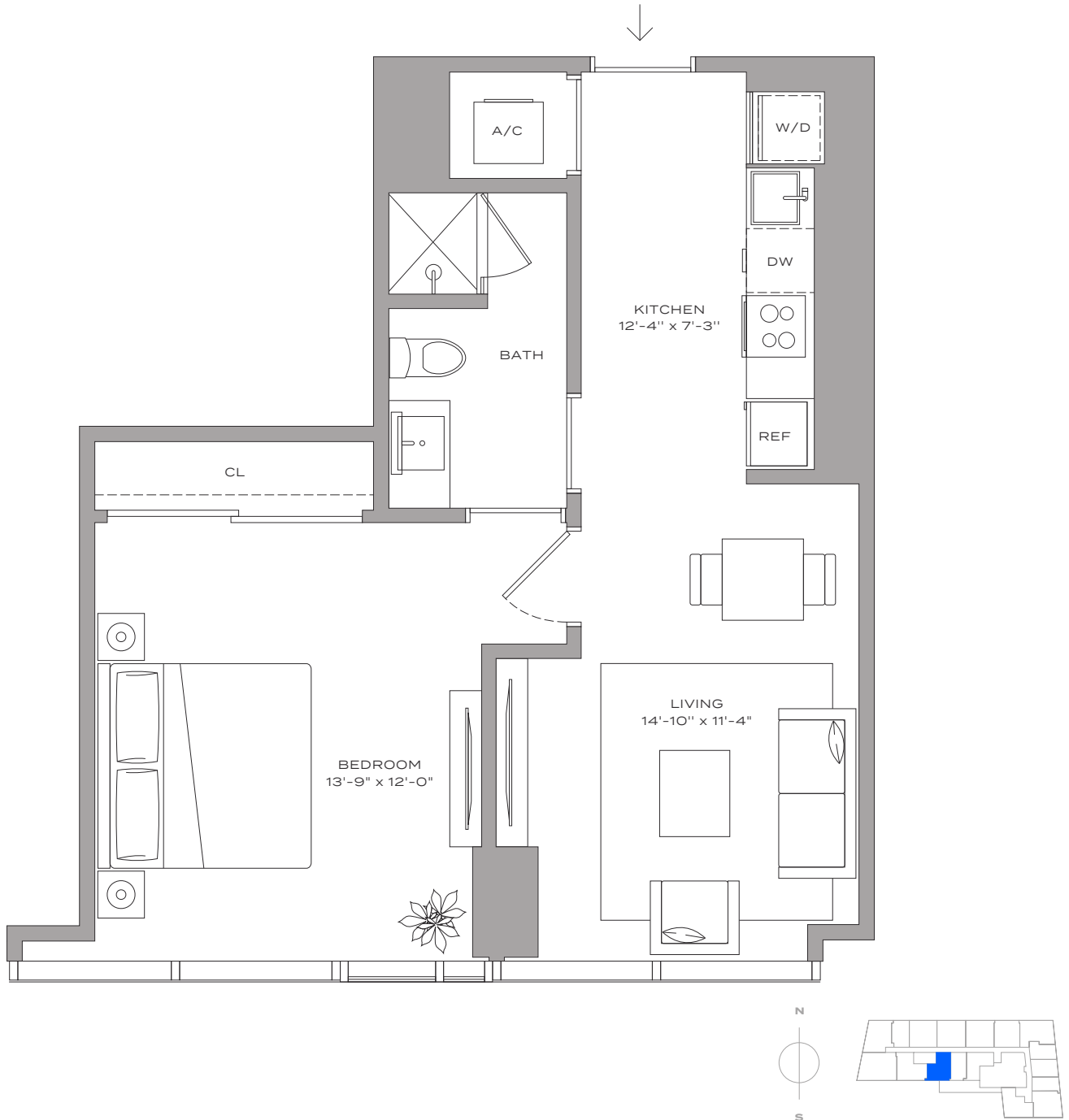
# Residence A7 – 15



MIAMI RESIDENCES

1 BEDROOM | 1 BATHROOM

588 SQFT | 55 M<sup>2</sup>



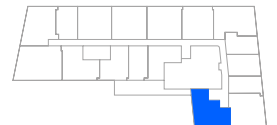
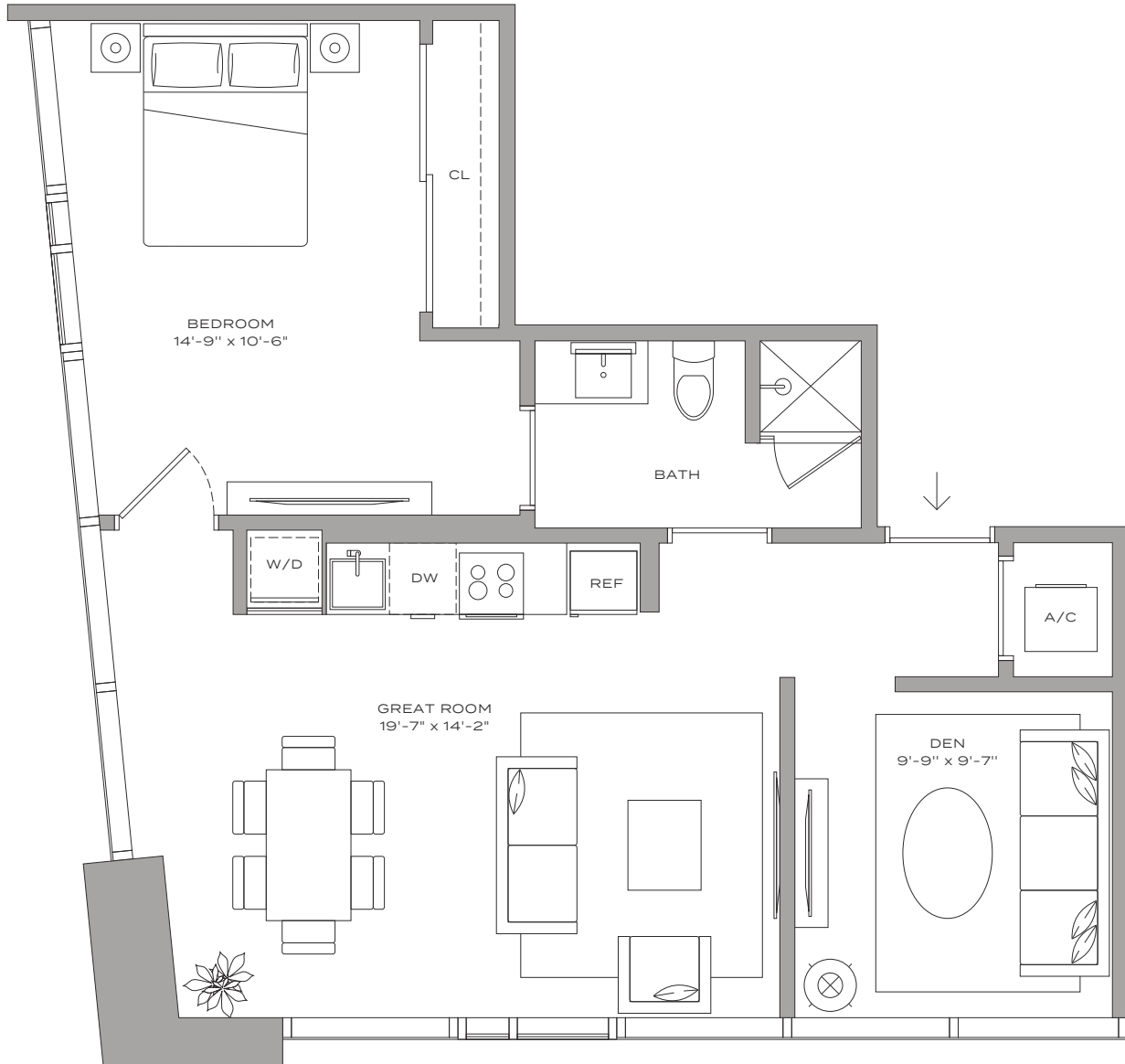
# Residence A8 – 01

# HUB

MIAMI RESIDENCES

1 BEDROOM + DEN | 1 BATHROOM

713 SQFT | 66 M<sup>2</sup>



SALES & MARKETING BY  
**ONWORLD**  
PROPERTIES

The John Buck Company

FVP **FLORIDAVALUE**  
PARTNERS

  
BH GROUP

  
PEBB ENTERPRISES  
Since 2011

Stated dimensions are measured to the exterior boundaries of the exterior walls and the centerline of interior demising walls and in fact vary from the dimensions that would be determined by using the description and definition of the "Unit" set forth in the Declaration (which generally only includes the interior airspace between the perimeter walls and excludes interior structural components). For your reference, the area of the Unit, determined in accordance with those defined unit boundaries, is 1,044 square feet. Note that measurements of rooms set forth on this floor plan are generally taken at the greatest points of each given room (as if the room were a perfect rectangle), without regard for any cutouts. Accordingly, the area of the actual room will typically be smaller than the product obtained by multiplying the stated length times width. All dimensions are approximate and may vary with actual construction, and all floor plans and development plans are subject to change.

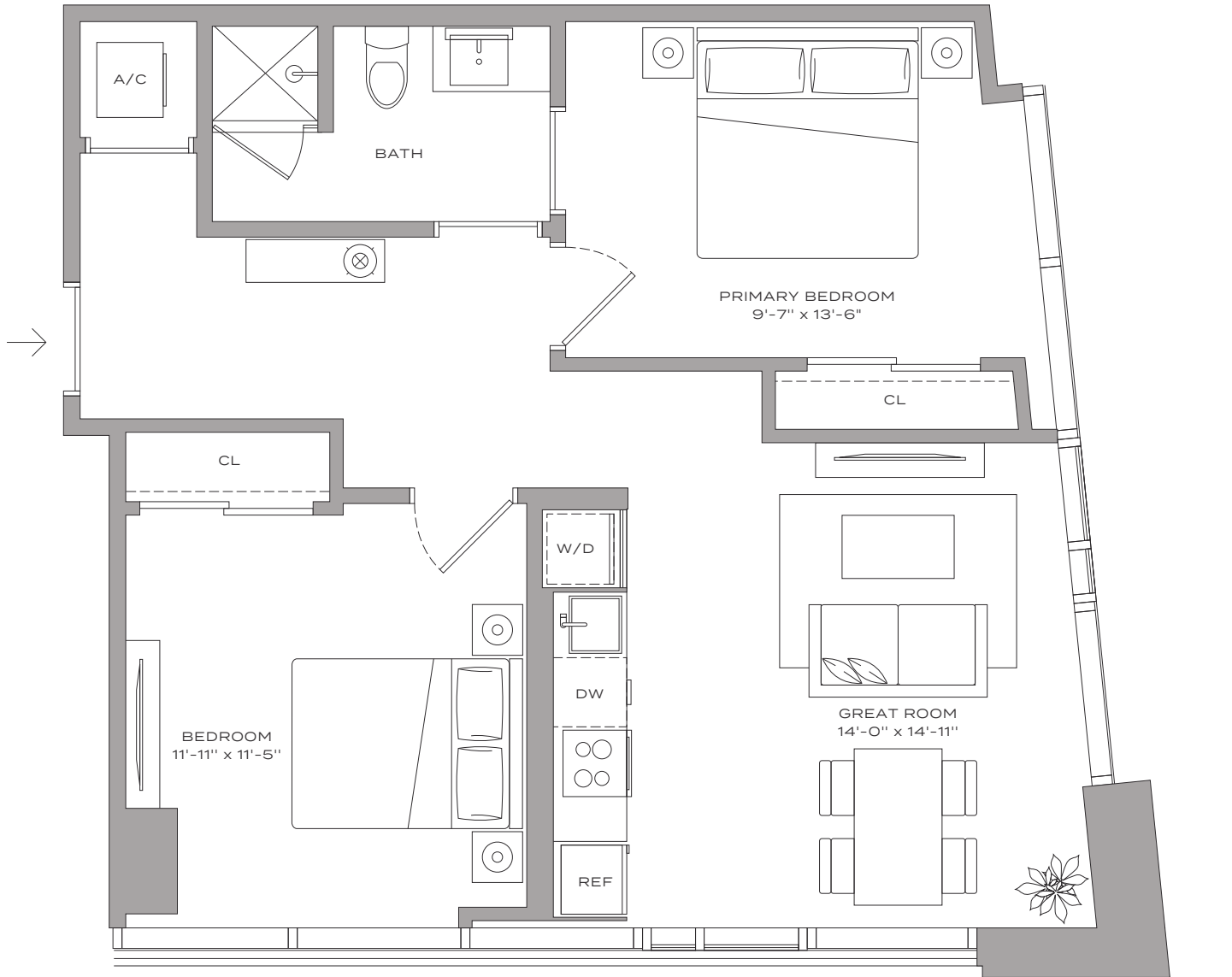
# Residence B3 - 02

# HUB

MIAMI RESIDENCES

2 BEDROOMS | 1 BATHROOM

750 SQFT | 70 M<sup>2</sup>



SALES & MARKETING BY  
**ONWORLD**  
PROPERTIES

The John Buck Company

FVP **FLORIDAVALUE**  
PARTNERS

  
BH GROUP

 **PEBB ENTERPRISES**  
Since 2011

Stated dimensions are measured to the exterior boundaries of the exterior walls and the centerline of interior demising walls and in fact vary from the dimensions that would be determined by using the description and definition of the "Unit" set forth in the Declaration (which generally only includes the interior airspace between the perimeter walls and excludes interior structural components). For your reference, the area of the Unit, determined in accordance with those defined unit boundaries, is 1,044 square feet. Note that measurements of rooms set forth on this floor plan are generally taken at the greatest points of each given room (as if the room were a perfect rectangle), without regard for any cutouts. Accordingly, the area of the actual room will typically be smaller than the product obtained by multiplying the stated length times width. All dimensions are approximate and may vary with actual construction, and all floor plans and development plans are subject to change.

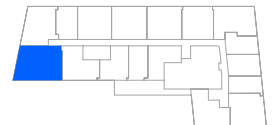
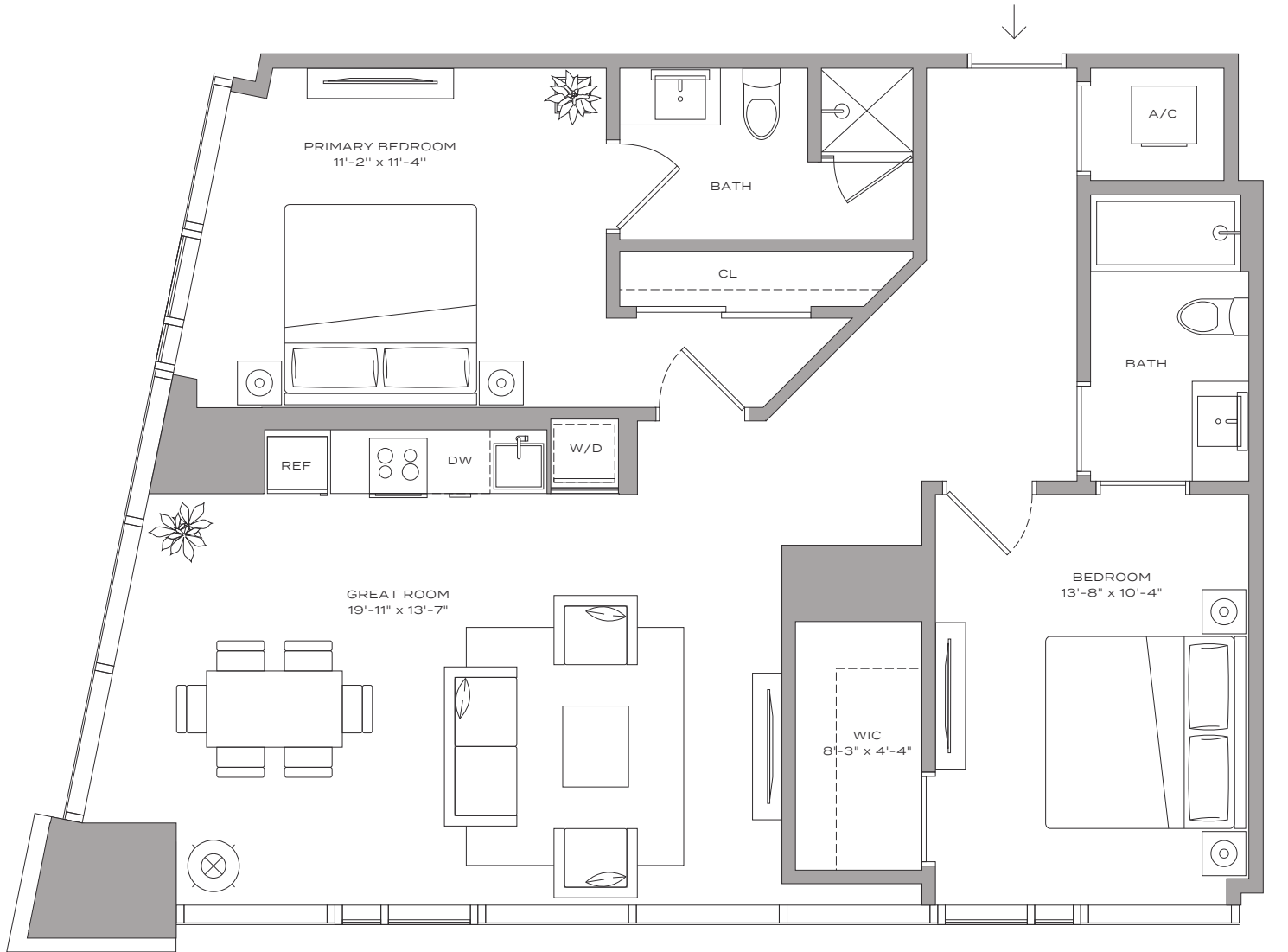
# Residence B1 – 13

# HUB

MIAMI RESIDENCES

2 BEDROOMS | 2 BATHROOMS

1,046 SQFT | 97 M<sup>2</sup>



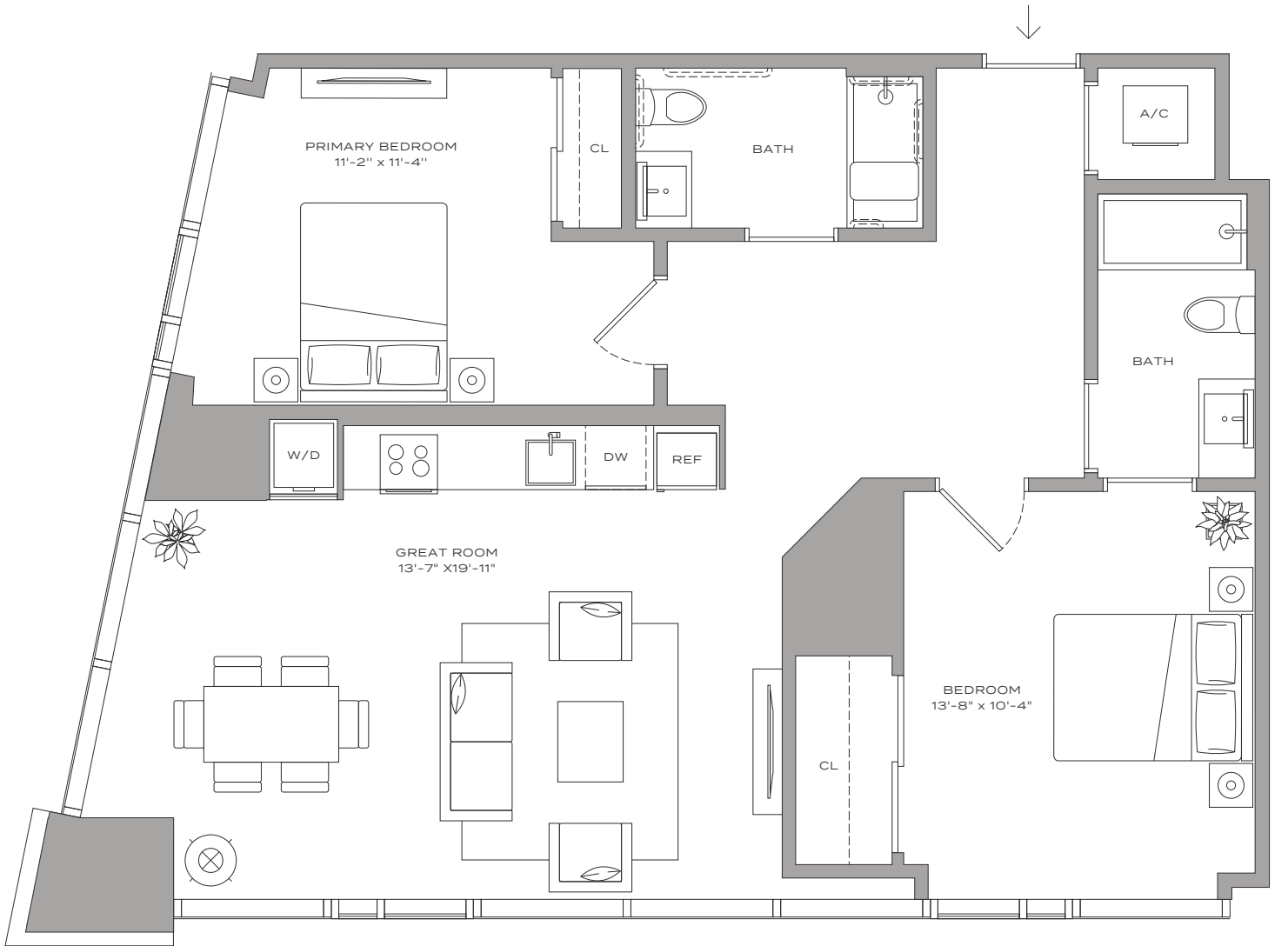
# Residence B1 ADA - 13

# HUB

MIAMI RESIDENCES

2 BEDROOMS | 2 BATHROOMS

1,046 SQFT | 97 M<sup>2</sup>



SALES & MARKETING BY  
**ONWORLD**  
PROPERTIES

The John Buck Company

FVP FLORIDAVALE  
PARTNERS

BH GROUP

PEBB ENTERPRISES  
REAL ESTATE

Stated dimensions are measured to the exterior boundaries of the exterior walls and the centerline of interior demising walls and in fact vary from the dimensions that would be determined by using the description and definition of the "Unit" set forth in the Declaration (which generally only includes the interior airspace between the perimeter walls and excludes interior structural components). For your reference, the area of the Unit, determined in accordance with those defined unit boundaries, is 1,044 square feet. Note that measurements of rooms set forth on this floor plan are generally taken at the greatest points of each given room (as if the room were a perfect rectangle), without regard for any cutouts. Accordingly, the area of the actual room will typically be smaller than the product obtained by multiplying the stated length times width. All dimensions are approximate and may vary with actual construction, and all floor plans and development plans are subject to change.

# Residence B2 – 06

# HUB

MIAMI RESIDENCES

2 BEDROOMS | 1 BATHROOM

804 SQFT | 75 M<sup>2</sup>

