



## Campo Bello: Single Family



Square footages from the 2,417s to the 2,470s

Campo Bello will be a beautiful, tastefully designed community of single-family homes and Lennar's innovative 'twin home' concept in South Miami-Dade County. Exceptionally spacious and stunning, Campo Bello single-family homes are located at premium corner homesites.

All Campo Bello homes feature Smart Home Technology with activation and support by Amazon and voice control by Alexa, delivering connectivity, safety and convenience. Lennar's Everything's Included® experience ensures that you don't have to compromise on luxury features.



## Campo Bello: Single Family

---

### Community Amenities:

**Clubhouse**

with Social Party Room

**HOA**

Ask an NHC for details.

**Swimming Pool**

With covered terrace,  
sundeck areas and outdoor  
spa

### Community Services:

**Cable TV**

AT&T Entertainment  
Services  
877-910-0501

**Post Office**

United States Postal Service  
800-275-8777

**Electric Company**

FPL  
305-442-8770

**Waste Water Company**

Miami Dade Water & Sewer  
786-268-5200



## Campo Bello: Single Family

### Banyan

by Lennar

**2,417 Square Feet**

**2.5 Bathrooms**

**3 Bedrooms**

**2 Stories**

**2 Car Garage**

A stunning 2,887-square-foot 2-story single family home, Banyan features 3 bedrooms, 2 baths, a powder room, family room, breakfast area, patio, and 2-car garage. **Smart Home Technology with activation and support by Amazon and voice control by Alexa** delivers connectivity, safety and convenience, while Lennar's **Everything's Included®** experience ensures that you don't have to compromise on luxury features.

Step through a covered entry into a large foyer, opening to a vast great room with access to the 2-car garage. This space, ideal for more formal entertaining, is graced by a staircase, a hallway leading to a linen closet and powder room, and an archway to the combined family room, kitchen, and breakfast nook. With open sight lines, this inviting area boasts sliding glass doors overlooking the patio.

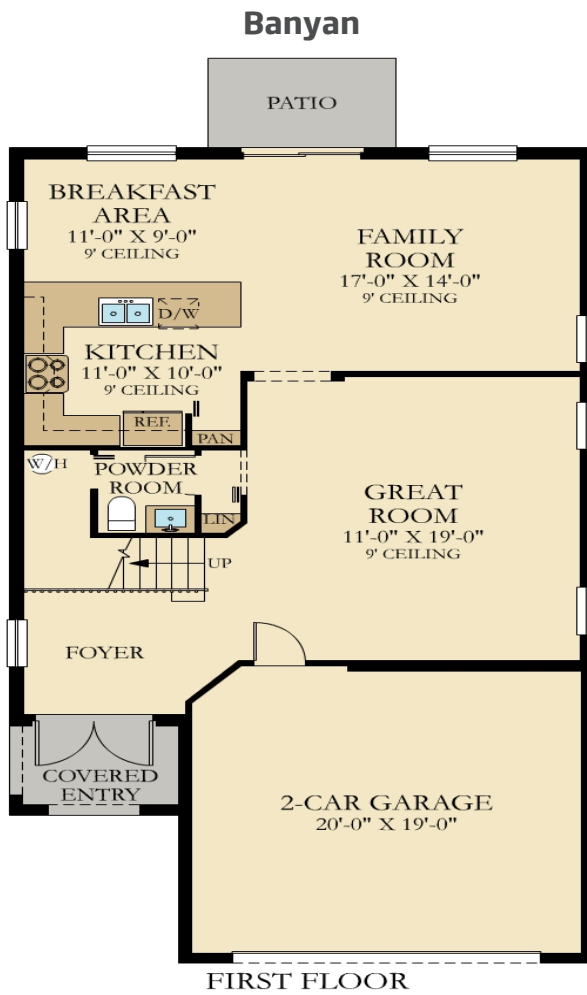
Well-equipped and elegant, the kitchen offers state-of-the-art stainless steel appliances, ample counter space, cabinets in a variety of appealing colors, and a pantry.

Upstairs, a central hallway leads to the spacious laundry room, linen closet, bedrooms 2 and 3, their shared Jack and Jill bathroom, and the master suite. The grand master suite boasts coffered ceilings and two expansive walk-in closets. Luxurious and spa-like, the master bath, offers both an indulgent Roman tub and a large glass-enclosed shower, dual sinks with separate vanities, and a private water closet.

### Banyan



## Campo Bello: Single Family



*\* Plans and elevations are artist's renderings and may contain options, which are not standard on all models. Lennar reserves the right to make changes to these floor plans, specifications, dimensions and elevations without prior notice. Stated dimensions and square footage are approximate and should not be used as representation of the home's precise or actual size. Any statement, verbal or written, regarding "under air" or "finished area" or any other description or modifier of the square footage size of any home is a shorthand description of the manner in which the square footage was estimated and should not be construed to indicate certainty.*

### Banyan



### SECOND FLOOR

*\* Plans and elevations are artist's renderings and may contain options, which are not standard on all models. Lennar reserves the right to make changes to these floor plans, specifications, dimensions and elevations without prior notice. Stated dimensions and square footage are approximate and should not be used as representation of the home's precise or actual size. Any statement, verbal or written, regarding "under air" or "finished area" or any other description or modifier of the square footage size of any home is a shorthand description of the manner in which the square footage was estimated and should not be construed to indicate certainty.*



## Campo Bello: Single Family

---

### Flora

by Lennar

**2,470 Square Feet**

**3 Bathrooms**

**4 Bedrooms**

**2 Stories**

**2 Car Garage**

Flora is a striking 2,932-square-foot 2-story single family home with 4 bedrooms—one of which is on the ground floor—3 baths, a family room, 2-car garage, and patio. **Smart Home Technology with activation and support by Amazon and voice control by Alexa** delivers connectivity, safety and convenience, while Lennar's **Everything's Included®** experience ensures that you don't have to compromise on luxury features.

Walk through the covered entry into a grand space consisting of the tiled foyer, living room, and dining room. Featuring an open layout, this area is great for entertaining. To the left, you'll find the staircase, as well as a hallway that leads to a 2-car garage, full bath—with glass-enclosed shower and linen closet—and bedroom 4. Its ground floor location makes this bedroom ideal for an elderly family member or older child who values privacy.

Off the dining room, an archway leads to the combined kitchen and family room. The kitchen has everything you need—and more!—to create five-star meals right at home: stainless steel appliances, cabinets in various designer colors, ample counter space, and a pantry. Overlooking the patio through sliding glass doors, the family room is conducive to relaxing while the kids have fun outside.

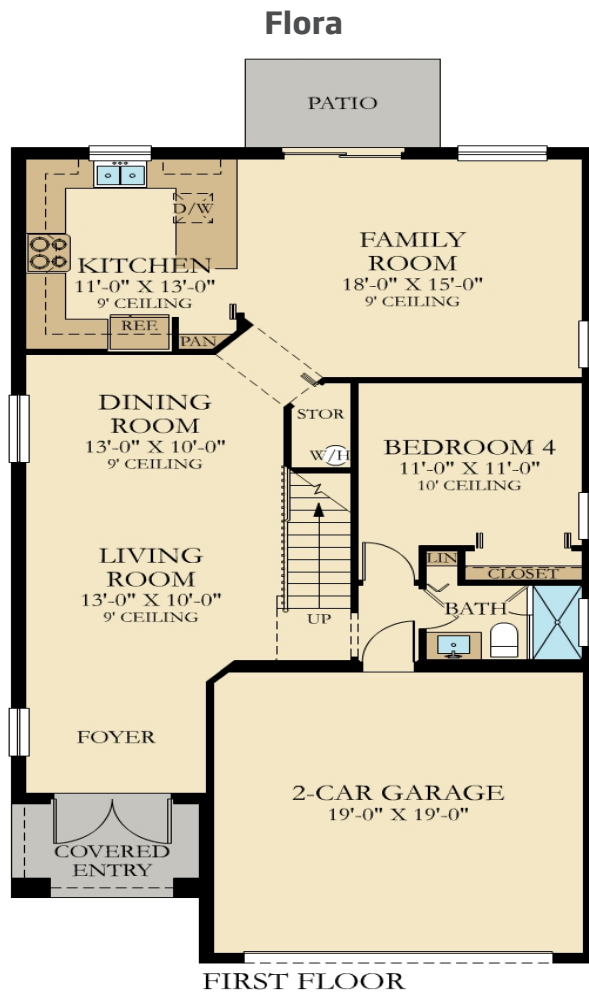
On the second floor, a central hallway provides access to the stunning master suite, bedrooms 2 and 3—the former offering a large walk-in closet—a full bath with dual sinks and a bath tub, and a laundry room and linen closet.

Occupying the entire west wing, the master suite is a dreamy retreat. Coffered ceilings add elegant detail and a private hallway to the exceptional bathroom sweeps past two expansive walk-in closets. Beautifully appointed with both a Roman tub and glass-enclosed shower, as well as dual sinks, linen closet, and separate water closet, the master bath is a haven you won't want to leave.

Immediately adjacent to the master, bedroom 3 is perfect for a young child or a home office.

**Flora**

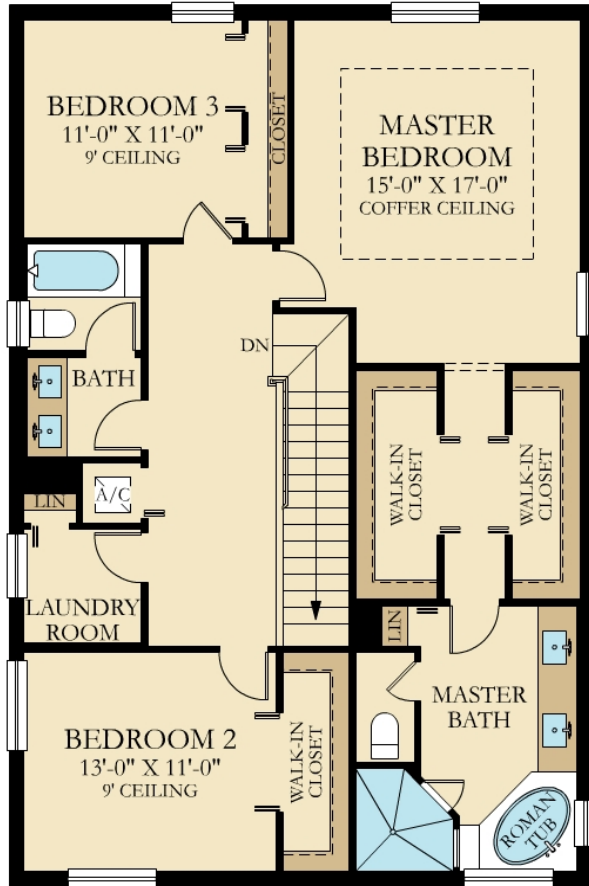
## Campo Bello: Single Family



*\* Plans and elevations are artist's renderings and may contain options, which are not standard on all models. Lennar reserves the right to make changes to these floor plans, specifications, dimensions and elevations without prior notice. Stated dimensions and square footage are approximate and should not be used as representation of the home's precise or actual size. Any statement, verbal or written, regarding "under air" or "finished area" or any other description or modifier of the square footage size of any home is a shorthand description of the manner in which the square footage was estimated and should not be construed to indicate certainty.*

## Campo Bello: Single Family

### Flora



### SECOND FLOOR

*\* Plans and elevations are artist's renderings and may contain options, which are not standard on all models. Lennar reserves the right to make changes to these floor plans, specifications, dimensions and elevations without prior notice. Stated dimensions and square footage are approximate and should not be used as representation of the home's precise or actual size. Any statement, verbal or written, regarding "under air" or "finished area" or any other description or modifier of the square footage size of any home is a shorthand description of the manner in which the square footage was estimated and should not be construed to indicate certainty.*